

agile

Desktop Color Laser MFP
DP-MC210

PRINT 21ppm mono / color

COPY 21ppm mono / color

SCAN to PC / SD Card

FAX with Super G3

50 Sheet ADF Standard
Network Ready
(10 Base-T/100 Base-TX)
Duplex Printing Standard



Simple Fax Preview!



Panasonic ideas for life



Design and Functionality

The DP-MC210 is a high-performance “desktop” MFP that means business. With its 250-sheet multi-purpose tray and 2nd 520-sheet tray standard, this space-saving all-in-one solution has the capacity to handle big jobs, plus a 50-sheet ADF for scanning and copying multiple originals. Not only is the DP-MC210 network-ready with standard 10/100 Base-TX connectivity, but it is also IPv6-ready for next-generation networks. The large 3.6-inch color LCD (TFT) display and intuitive control panel layout set a new standard in user-friendly operation, while having the ability to monitor toner levels, edit the built in address book and adjust common user settings via the network using a browser, making device management a breeze. User Friendly Design improves efficiency and simplifies maintenance, as well as offering features like printing and scanning from the built-in SDHC card slot and standard duplex for easy 2-sided copies and prints. The DP-MC210 is the ideal solution for the small and medium-sized office looking for maximum functionality, ease of use, and performance in a compact footprint.

Large 3.6” Color LCD



Easy to lift ADF

Direct SDHC slot

Easy-to-view inner tray

Easily accessible maintenance door

SD Card Image Preview



Direct SD Card Slot



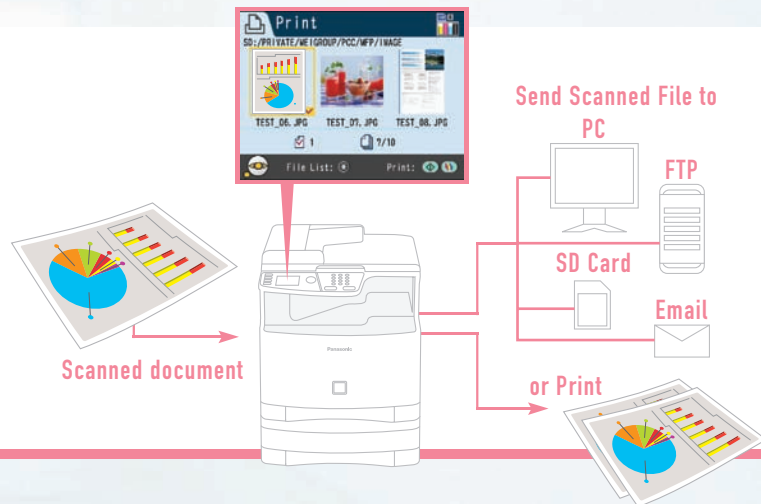
SDHC Card Direct Printing

Just Insert your SD memory card into the SDHC card slot and directly print PDF, JPEG, and TIFF files without using a PC. Picture data taken on your digital camera can be conveniently previewed on the large LCD display.

Printing

From high-quality color prints up to 1200 x 1200 dpi and a quick output speed of 21ppm in both monochrome and color. The DP-MC210 is unlike other MFP's that use a complex 4-pass process, our 1-pass technology powered by a tandem print engine achieves the same high-speed printing for both color and monochrome, as well as simplifying consumable replacement and recovery from the rare paper jam. Advanced features like standard duplex for automatic 2-sided printing, "watermark" printing for identifying confidential or sample documents, "overlay" printing of corporate logos, and enhanced "N in 1" function (up to 16 document images on 1 sheet) are all standard. Built-in network connectivity and expanded input capabilities enable users to select and print multiple print jobs from an FTP server or print directly from an SDHC card, taking full advantage of all the cutting-edge print functionality.

Scan Preview

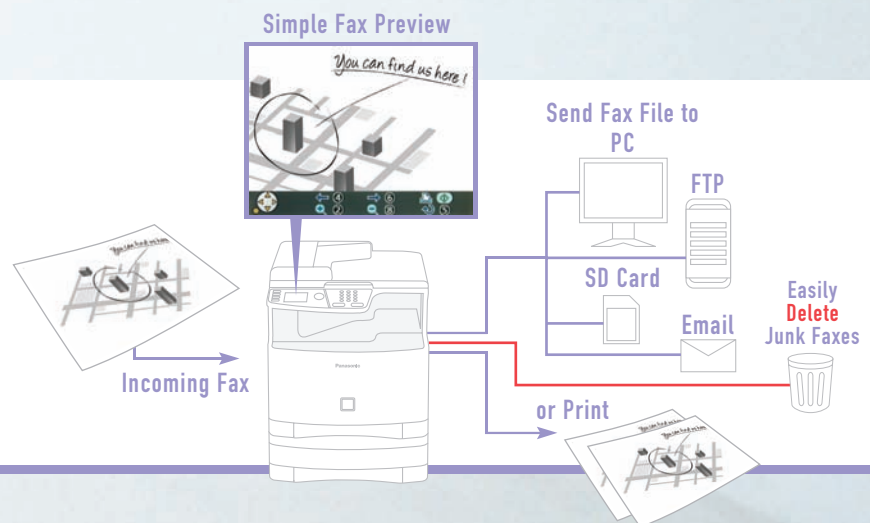


Scanning

Convert paper into digital documents easily, efficiently and in full color with flatbed scanning of originals up to legal size or with the built-in 50-sheet ADF. Scan documents directly onto your desktop, send them by Email, store them on an SD memory card or transmit them to an FTP server for convenient document sharing. All this scanning versatility is at your finger tips via the user-friendly control panel. For even more convenience, the standard Readiris OCR software included with the DP-MC210 allows you to convert scanned documents into text editable documents.

Super G3 Faxing

With FAX Preview, you can easily zoom, rotate and scroll through incoming faxes on the large color LCD display before printing or you can forward the data to a PC or FTP server, store it on an SD memory card, send it as an Email attachment or delete it. The DP-MC210 also features a Junk Fax Filter to block unwanted faxes before wasting paper and the Mistake Dial Prevention feature assures documents are sent to the correct destination.



N in 1 Functions

Economical Copy Functions

Fast copy output up to 600 x 600 dpi in both color and monochrome is just the beginning. For example, the enhanced N in 1 function opens up a world of practical applications and paper-saving possibilities. Users will also appreciate the Proof Set Copy function to avoid making costly errors when copying a large job where multiple copies and settings are used.

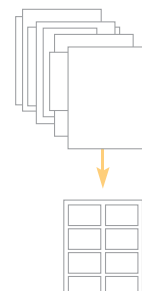
Quick ID Copy

Scan both sides of one or multiple ID cards consecutively and print the data on a single page in the 2 in 1, 4 in 1 or 8 in 1 format.



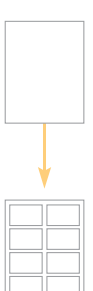
Mixed Size N in 1

Scan documents of various sizes, and the DP-MC210 will auto-size them for printing on a single page in the 2 in 1, 4 in 1 or 8 in 1 format.



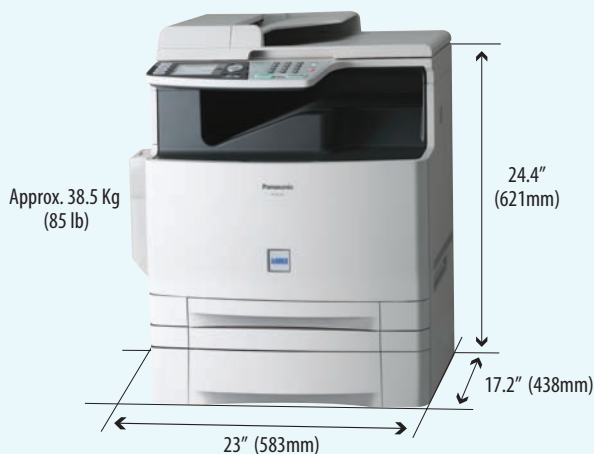
Easy Repeat

Scan one original and print it repeatedly on a single page in the 2 in 1, 4 in 1 or 8 in 1 format.



DP-MC210 Dimensions & Options

DIMENSIONS*1



Options

Deluxe Stand:	DA1D200
Handset Unit:	KX-FA103

Consumables

Toner		
Toner Cartridge (Black) :	DQ-TUA04K	4,000 pages (with 5% coverage)
Toner Cartridge (Cyan) :	DQ-TUA04C	4,000 pages (with 5% coverage)
Toner Cartridge (Magenta):	DQ-TUA04M	4,000 pages (with 5% coverage)
Toner Cartridge (Yellow):	DQ-TUA04Y	4,000 pages (with 5% coverage)
Drum Cartridge		
Color :	DQ-UHA10C	10,000 pages
Monochrome:	DQ-UHA10K	10,000 pages
Waste Toner Cartridge :	DQ-BFA32	Color: 8,000 pages (with 5% coverage) Black: 32,000 pages (with 5% coverage)

DP-MC210 Specifications

General

Type	Desktop
Copy/Print Process	Electrostatic Printing Method
Developing Process	Single Component
Automatic Document Feeder	50 sheets (8.5" x 11", 20 lb)
Paper Feed	Standard : 250 sheets paper tray plus 520 sheet paper tray
Paper Weight	60 to 165g/m ²
Paper Size	Letter/Legal/A4/Envelope (#10, DL)
Media Interface	SD Card max. 4GB (SDHC)
Power Requirements	AC 120 V, 60 Hz
Power Consumption	Max.: Approx. 1,000 W Standby: Approx. 20 W
Warm-up Time (68°F/20°C)	Approx. 38 sec.

Printer

Network Printer Interface	Ethernet 10Base-T/100Base-TX
Local Printer Interface	High speed USB 2.0
Printer Language	GDI, PCL 6 Emulation
Printing Speed *2	B/W: Up to 21 ppm Color: Up to 21 ppm
Paper Size	Letter/Legal/A4/Envelope (#10, DL)
Printing Resolution	Upto 1,200 dpi x 1,200 dpi
Compatible Operating Systems	Windows® Vista®, Windows®XP/2000/Me/98

Digital Copier

First Copy Time (300 dpi x 300 dpi)	B/W: Approx. 16 sec. (8.5" x 11") Color: Approx. 20 sec. (8.5" x 11")
Resolution	Up to 600 dpi x 600 dpi
Gray Scale	256 steps
Multi Copy Speed*2	B/W: Up to 21 cpm Color: Up to 21 cpm
Original Size	Letter/Legal
Zoom (variable)	25% - 400% (in 1% increments)
Multiple Copy	1 to 99 pages

Network Scanner / Scan-to-Email

Network Scanner Interface	Ethernet 10Base-T/100Base-TX
Maximum Scanning Size	8.5" (216mm)
Effective Scanning Width	8.2" (208mm)
Scanning Resolution	Up to 600 x 1200 dpi (Optical) Up to 9600 x 9600 dpi (Interpolated)
Compatible Client Operating Systems	Windows® Vista®, Windows®XP/2000/Me/98
Data Format	B/W: TIFF, PDF, JPEG Color: TIFF, PDF, JPEG

G3 Fax

Compatibility	G3 Fax: ITU-T Group 3, ECM
Modem Speed	33.6 kbps - 2.4 kbps with automatic fallback (G3 Fax)
Coding Scheme	MMR / MR / MH (Conforms to ITU-T Recommendations)
Transmission Speed*3	Approx. 4.0 sec (Letter)
Scanning Resolution	Standard: 203 dpi x 98 lpi (8 dots/mm x 3.85 lines/mm) Fine: 203 dpi x 196 lpi (8 dots/mm x 7.7 lines/mm) Super Fine: 406 dpi x 391 lpi (8 dots/mm x 15.4 lines/mm)
Effective Scanning Width	8.2" (208 mm)
Standard Memory*4	10MB
Speed Dials	300

Note

- *1 Dimensions and weights are approximate.
- *2 Speeds are contingent upon applications, machine configuration, and status. Individual speeds may vary.
- *3 Transmission time applies to memory transmission of text data using only ITU-T Image No.1 between the same models at maximum modem speed. Transmission time may vary in actual usage. Usually public telephone lines can only support communication speeds of 28.8 Kbps or lower. Via PBX, transmission speed may fall back to a lower speed.
- *4 Based on ITU-T Image No.1 scanned in Standard mode.

Design and specification are subject to change without notice.

Microsoft® Windows® is a registered trademark of Microsoft Corporation.
Adobe, PostScript and PostScript 3 are either registered trademarks or trademarks of Adobe Systems, Inc.

PCL is a registered trademark of Hewlett-Packard.

The SDHC logo is a trademark.

All other brand or product names are the property of their respective holders.

IPv6 Ready Logo is the international IPv6 product's certification program managed by the IPv6 Ready Logo Committee.
This Product is designed to reduce hazardous chemical substances along with the RoHS directive.

Panasonic®

Panasonic Communications Company of North America
One Panasonic Way, Secaucus, NJ 07094
For a local dealer, please call 1-800-742-8086
panasonic.com/office



As an ENERGY STAR® Partner, Panasonic has determined that this product meets the ENERGY STAR guidelines for energy efficiency.



ISO 9001 Quality Management System

Our business processes which produce document, information and network products, from manufacturing to marketing, conform to ISO9001 Quality Management Systems standard. Design, development, manufacture, installation, repair and maintenance of document, information and network products, their associated devices and consumables. In addition, the plants outside Japan have acquired ISO9001 certification.

DP-MC210 BR0209