

Installation Instructions



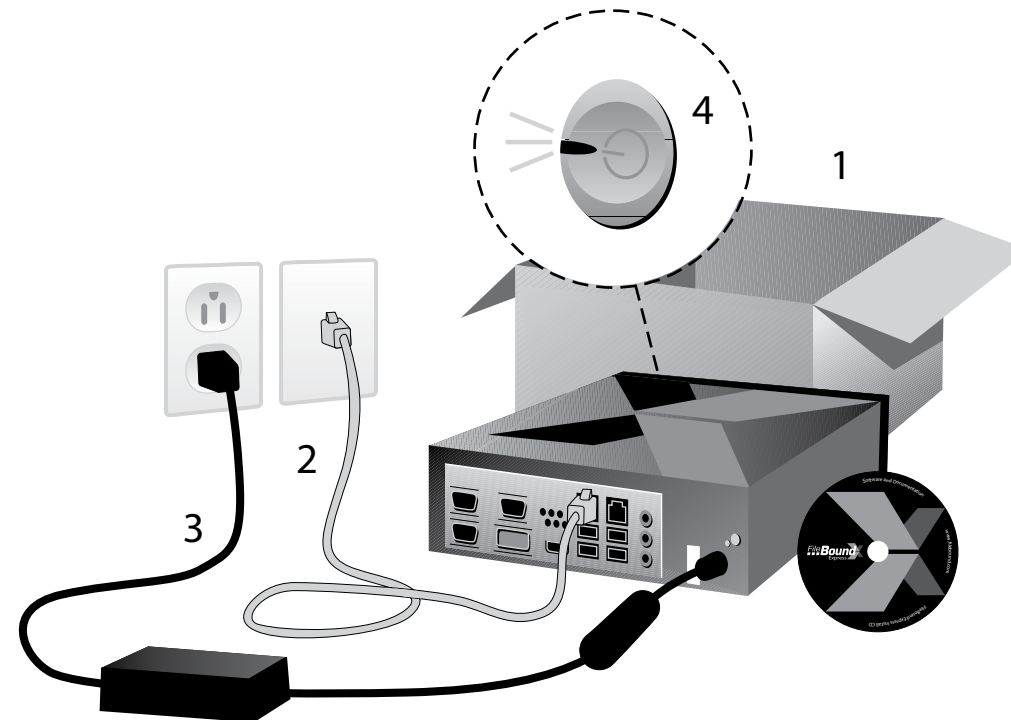
Instant Content Management

Express

FileBound
Express

1 Unpack, Connect and Power On the Express Appliance

1. Unpack the FileBound appliance
2. Connect the appliance to the network
3. Connect the appliance to power
4. Start (Turn On) the appliance by pressing the power button

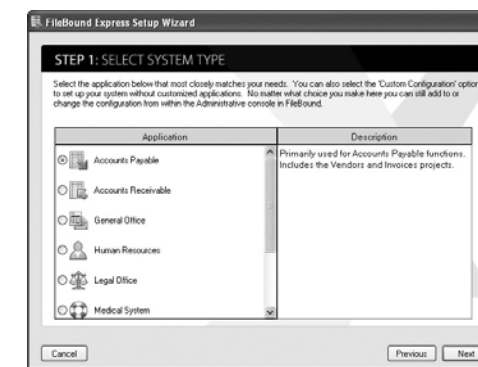


2 Run the Installation CD and Configure FileBound

1. Using a PC on the same network as the appliance, insert the FileBound Express Installation CD.
2. The FileBound Wizard will start. Click **Next** on the Welcome Screen.

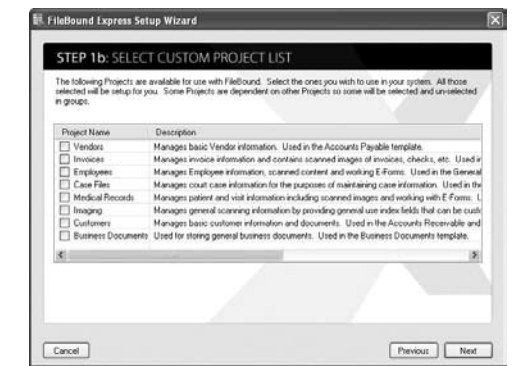


3. Select the primary application that the appliance will be used for from the list of applications. Click **Next** when finished.



Section 2 Cont.

4. If "Custom Configuration" is selected click **Next** and you will be presented with a list of all available applications. Select the applications that should be installed and click **Next**.



5. Enter a username and password for at least one user that has the "Administrative User" role.



Section 2 Cont.

6. Enter the usernames, passwords and roles to set up the initial FileBound users.

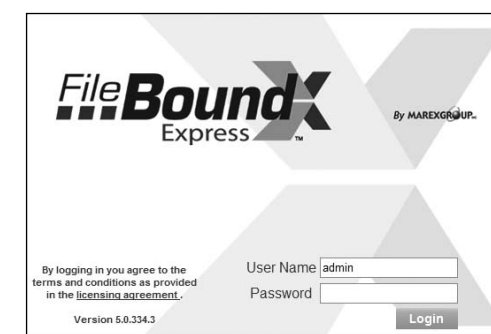


7. Verify the information on the Setup Confirmation Screen. Click **Next** when finished



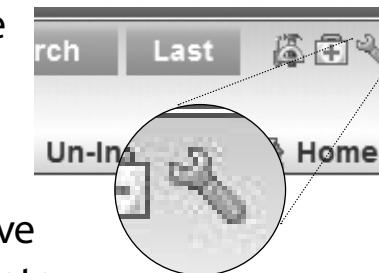
3 Start Using FileBound

1. Access the FileBound Content Management Solution by opening Internet Explorer
2. Enter "FileBound" within the address bar and press **Enter**.
3. Enter a Valid username and password and click **Login**.



4 Additional Support Information

- For technical support please contact Marex Group at support@fileboundexpress.com
- For additional information on how to add additional users, configure back-ups and security settings, please refer to the documentation directory on the FileBound Express Installation CD.
- If you need to create your own custom application use the FileBound Admin Console once you have successfully logged into the FileBound website.
- It is highly recommended that you create a backup strategy so that recovery can be accomplished if necessary. For additional information on configuring and scheduling backups refer to the documentation directory on the FileBound Express Installation CD.



FileBound
Express

1701 Cushman Drive, Lincoln, NE 68512
370 Interlocken Blvd., Suite 670, Broomfield, CO 80021

1-888-5XPRESS
(1-888-597-7377)

www.filebound.com