

RELEASE LETTER

DR-2050SP / DR-2050C

Canon Publication Number:	07-DR-2050SP/C Version 1.1
Revises:	1.0
Replaces:	1.1
Total Pages:	29

© 2007 Canon USA, Inc. All Rights Reserved.

The information contained in this release letter is proprietary and confidential information of Canon U.S.A. This document is intended for internal use by Canon U.S.A. Inc. employees and employees of authorized dealers and resellers only.

Transfer of this document to any other parties not specified above without the written permission of Canon U.S.A. Inc. is in violation of the confidentiality of this information. All referenced trademarks and product names are the property of their respective owners and are hereby acknowledged.

Please utilize this document as your main source of information regarding the Canon DR-2050SP and DR-2050C and related accessories. Further information on Canon DR-2050SP and DR-2050C may be obtained by contacting your Canon sales representative.



About Canon U.S.A., Inc.

Canon U.S.A., Inc. is an industry leader in professional and consumer imaging solutions and, through its parent company, Canon Inc. (NYSE:CAJ), is a top patent-holder of imaging technologies. The company's comprehensive product line includes networked multifunction devices; digital and analog copiers (color and black and white); printers, scanners, image filing systems, and facsimile machines; camcorders, cameras and lenses; and semiconductor, broadcast and medical equipment. Canon employs 12,000 people at more than 30 facilities throughout North, Central and South America and the Caribbean.

Table Of Contents

About Canon USA	2
Suggested Retail Price List	4
Introduction	5
Market Trends	5
DR-Scanner Line-up	6
DR-2050SP "Scan-to-Projector" Technologies	7
DR-2050C/ Dr-2050SP Core Scanning Technologies	8
Sleek, Space Saving Design	8
Superior Image Quality	9
Fast Throughput	9
Reliable Paper Feeding Mechanism	10
Energy Saving Design	11
Scan-To-Job Functionality	11
Inherited DR-Series Features	11
Simple Connectivity	12
Recommended PC Specifications	12
WHQL Certification	12
<i>Bundled Software</i>	
Easy Installer Tool	13
CapturePerfect 3.0	13
Adobe Acrobat 8.0	19
OmniPage SE 4	19
Maintenance	21
DR-2050C/ DR-2050SP Options and Consumables	21
DR-2050C/ DR-2050SP Specifications	22
Competitive Overview	24
Packaging DR-2050C	25
Packaging DR-2050SP	26
Service / Support Information	27
Brochure Ordering	28
Online Sales Support Materials /Online Training Resources	28
DR-2050C Release Letter Revision History	29

Suggested Retail Price List

DR-2050SP

Item No.	Description	Retail Price
2099B002AB	Canon DR-2050SP* w/ 16/32 bit ISIS Driver for Windows 16/32 bit Twain Driver for Windows CapturePerfect 3.0 for Windows Adobe® Acrobat® 8.0 Standard OmniPage SE™ 4	\$895

Services

Item No.	Description	Retail Price
7982A010AA	2 Year CarePAK (Exchange Program) for DR-2050SP	\$250

DR-2050C

Item No.	Description	Retail Price
0433B002AD	Canon DR-2050C* w/ 16/32 bit ISIS Driver for Windows 16/32 bit Twain Driver for Windows CapturePerfect 3.0 for Windows Adobe® Acrobat® 8.0 Standard OmniPage SE™ 4	\$795

Services

Item No.	Description	Retail Price
7982A006AA	2 Year CarePAK (Exchange Program) for DR-2050C	\$225

Accessories

Item No.	Description	Retail Price
7982A001AA	Exchange Roller Kit for DR-2050C/ SP/ 2080C	\$49
1029V680	Soft Carrying Case for DR-2050C/ SP/ 2080C	\$69

Introduction

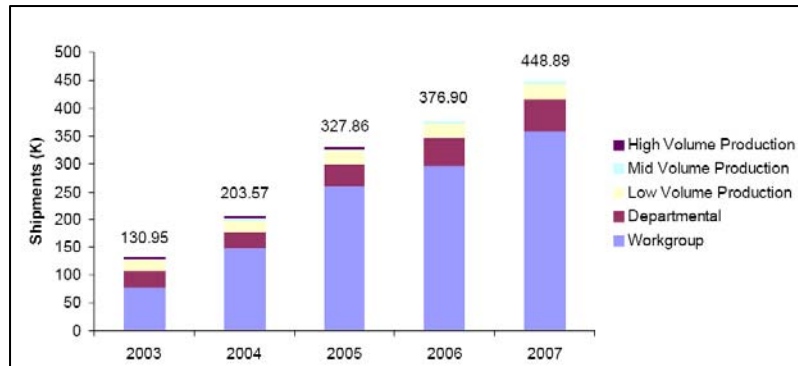
Market Trends

The document scanner market is categorized according to price and speed based on the following chart.

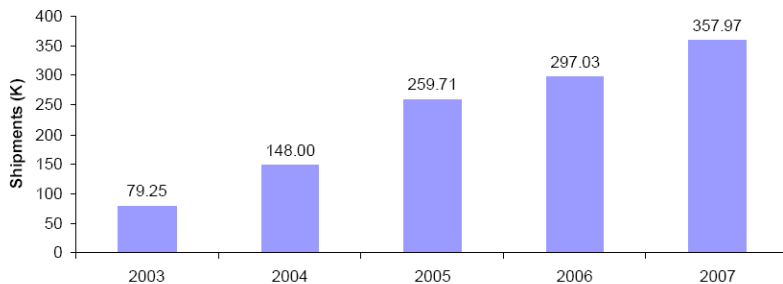
InfoTrends Segmentation for Document Imaging Scanners		
Category	Price Range	Speed Range
Workgroup	\$500 - \$2,000	Up to 25 ppm
Departmental	\$2,000 - \$5,000	Most 25 – 40 ppm
Low-volume Production	\$5,000 - \$12,000	Most 40 – 60 ppm
Mid-volume Production	\$12,000 - \$30,000	Most 60 – 90 ppm
High-volume Production	> \$30,000	Most 90+ ppm

Swiftly moving past the conventional niche imaging arenas, document scanning technologies are evolving to reach more diverse business markets. Distributed scanning and greater adoption of scanning for compliance issues within Corporate America continue to drive the document scanning market.

The high-growth workgroup category has been driving scanner shipments, and although boasting a 14.4% growth in 2006, an aggregate growth of 45.8% over the last 4 years, failed to reach the overly optimistic forecast numbers after a banner year in 2005.



Segment Forecast of Total Document Scanner Shipments 2002-2007*



Market experts have rebutted fears that developments in the Multi-Function Printer market maybe be the cause for the decrease in the 2006 Workgroup segment shipment numbers, though some continued impact can be expected. Furthermore compliance

and business process management will keep fuelling this segments growth, as they continue to solve process issues and built up the needed infrastructure.

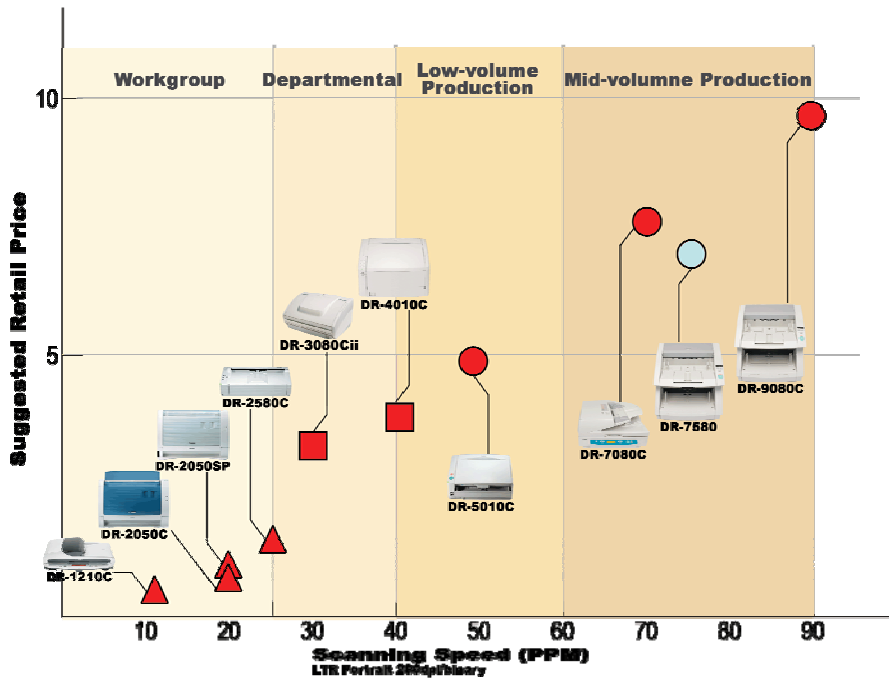
* Source: InfoTrends 2006 Document Imaging Scanner Market Forecast and Analysis, North America

DR-Series Scanner Line-up

The DR-2050C and DR-2050SP are compact workgroup scanners. Due to a strong brand and sales channel, Canon has continuously performed well in the workgroup segment since the introduction of the DR-2080C.

The award winning DR-2050C inherited the proven reliability and superior image quality of its predecessors, and offers the solid price-performance Canon's DR-Series Scanner line-up is known for. The DR-2050SP incorporates a "Scan-to-Projector" function to the DR-2050C, allowing it to connect directly to any standard projector for use as a multi-input presentation tool.

In response to the highly competitive market conditions of the workgroup segment, the DR-2050C and DR-2050SP ship with CapturePerfect 3.0, Adobe® Acrobat® 8.0 Standard and OmniPage SE™ 4. These bundled software applications, coupled with Canon's advanced hardware image technology, make the DR-2050C a remarkable value for under \$800 and DR-2050SP for under \$900.

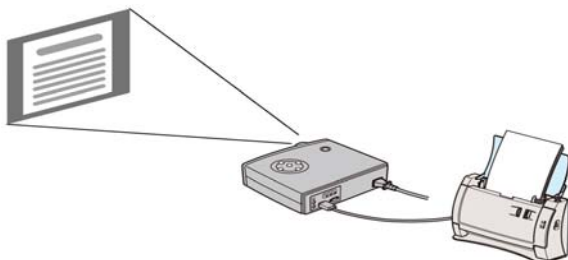


The limited warranty period for the DR-2050C and DR-2050SP has been extended to 1 year from standard DR-Series 90 day warranty (Please refer to DR-2050C and DR-2050SP Service Guide for details). Additionally, a 2-year Canon CarePak is available for post warranty exchange service.

DR-2050SP “Scan-to-Projector” Technologies

(Connected to a Standard Projector. DR-2050SP only)

The DR-2050SP is a compact desktop document scanner with innovative “Scan-to-Projector” functionality. Incorporating all the features of the DR-2050C, this scanner is also a multi-input presentation tool that can output images directly to a projector – without connecting to a PC.



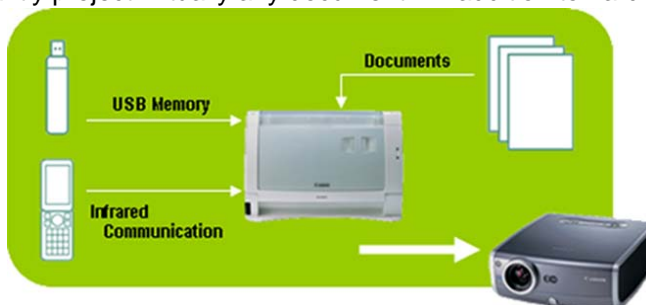
When the DR-2050SP is connected to a projector, it will work in Presentation mode. And when connected to a PC it will work in Scanner Mode. Please note that if the scanner is connected to both, the PC (Scanner Mode) will take precedence over the scanner (Presentation Mode).

The DR-2050SP has a built-in memory capable of holding up to 40 pages, as well as the ability to save to USB Memory Stick. And a remote control which provides quick and easy operations such as start scanning and navigation of scanned images.

Multi-Input Presentation

When connected to a standard data projector, the DR-2050SP turns into a remote control-operated presentation tool that can instantly project virtually any document. In addition to hard copy scanned documents, this scanner can project from a variety of input sources.

The DR-2050SP is also capable of projecting images from USB Memory and infrared-equipped mobile devices (IrDA).



High Resolution

The DR-2050SP supports SXGA (1,280 x 1,024 pixels) and XGA (1,024 x 768 pixels). When in Presentation Mode, the scan setting is fixed to color in 150 dpi. With this setting a letter sized document will scan with a width of 1,275 pixels, which projects in SXGA without any image deterioration or distortion.

Image Processing

In Presentation Mode, the DR-2050SP supports De-Skew, which is automatically available with “Auto Size Detection” is enabled, Auto Size Detection, and Color Correction.

Ease of Use

The easy to use remote control offers easy access to major presentation functions – including forward, reverse, rotate, zoom, view thumbnail, and more – though assigned keys, plus access to the on-screen menu to access further settings.

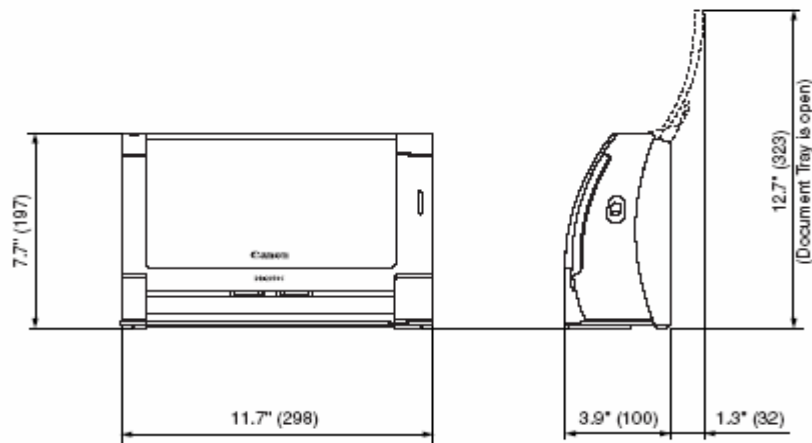
DR-2050C / DR-2050SP Core Scanning Technologies

(Connected to a PC)

When it comes to cost-effective, reliable document scanning, look no further than the DR-2050C and DR-2050SP. An ideal choice for low-volume image capture or distributed scanning environments, it achieves fast scanning at speeds **up to 20 pages per minute** (Letter/200 dpi/portrait) in Black and White or Grayscale and easily handles double sided documents **up to 40 images per minute**. With an **output resolution up to 600dpi**, the DR-2050C offers superior, high-quality scanning in black-and-white (binary), 256-level grayscale, or 24-bit color.

Sleek, Space Saving Design

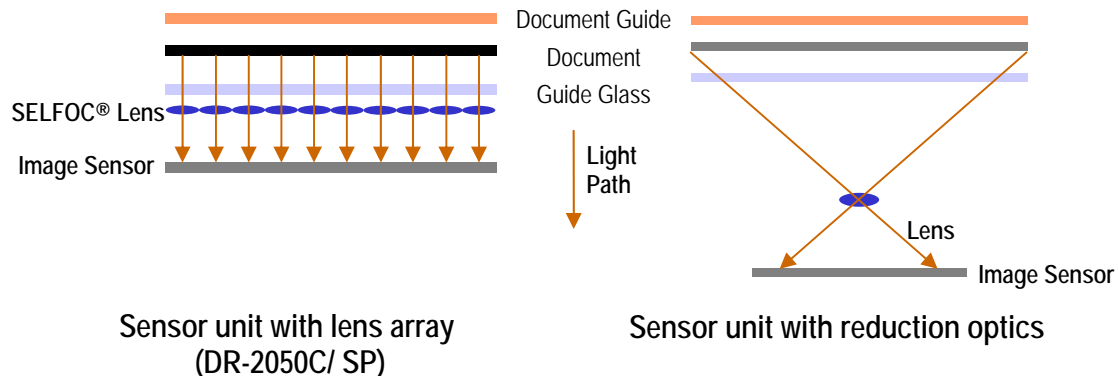
Measuring just **7.7" (H) x 11.7" (W) x 3.9" (D)** and weighing in at **5 lb.**, the DR-2050C can easily be moved around and set up quickly, even in the busiest desktop or countertop spaces.



The key to the DR-2050C and DR-2050SP's compact size is its **CMOS Contact Image Sensor (CIS)**. This is a self-contained sensor unit with 3 major components: a row of sensor elements, thin optics, and a light source (LEDs). The CIS unit is far smaller than conventional CCD-based sensor units, which use a bulky mirror-and-lens system known as "reduction optics."

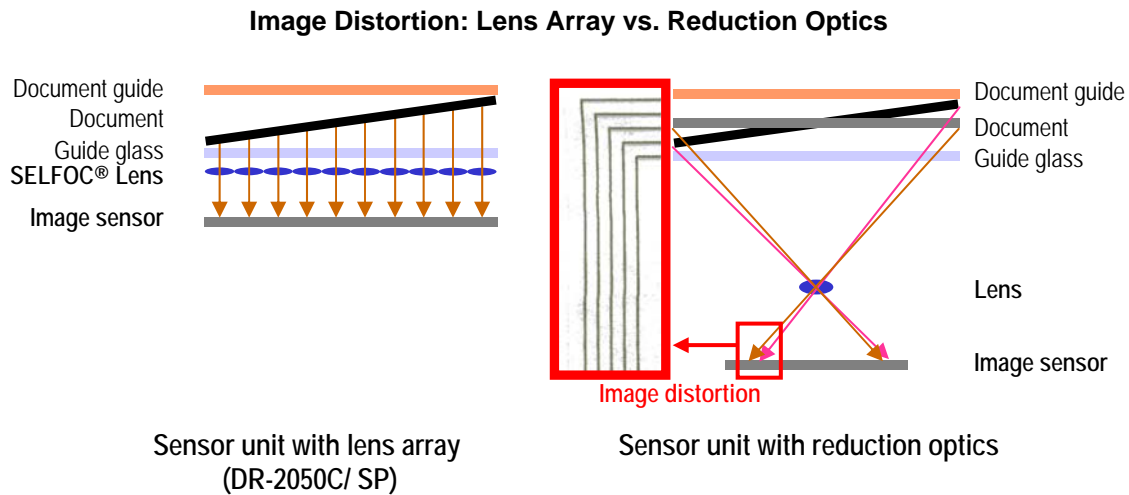
Unlike reduction optics, which have only one lens, the DR-2050C and DR-2050SP's optics are made up of a row of numerous small lenses. This design significantly shortens the light path required to illuminate the document. As a result, these scanner have a very small footprint.

Lens Array vs. Reduction Optics



Superior Image Quality

In addition to compact design, the advanced sensor technology of the DR-2050C and DR-2050SP offers other advantages over conventional Charge Coupled Device (CCD) and Optical Reduction technologies. Multiple lenses mounted along the width the DR-2050C's sensor helps **minimize potential image distortion**. Whereas a sensor unit with reduction optics has only one lens; if a document is not completely flat on the guide glass, some points of the page will be further from the lens than others, resulting in image distortion.



Furthermore, a short light path does not require a strong light source. So instead of using fluorescent lights, the DR-2050C uses LEDs, a light source that consumes less electricity. Additionally, fluorescent lights require time to warm up, but LEDs do not. As a result, the DR-2050C and DR-2050SP are ready to start scanning from the moment the power switch is turned on.

Fast Throughput

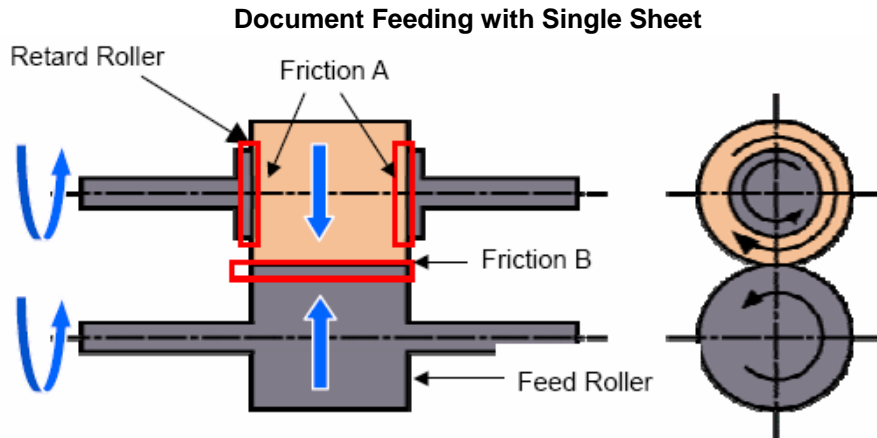
The DR-2050C and DR-2050SP offer competitive scanning speeds compared to other models in its category with a rated speed of up to 20 ppm or 40 ipm (LTR/200 dpi/portrait) in B/W and Grayscale modes.

Scanning Speeds (LTR/200 dpi/portrait)	Canon DR-2050C	Fujitsu fi-4120C2	Fujitsu fi-5110C
Black-and-White	20ppm / 40ipm	25ppm / 50ipm	15ppm / 30ipm
Grayscale	20ppm / 40ipm	25ppm / 50ipm	15ppm / 30ipm
Color	10ppm / 20ipm*	25ppm / 50ipm*	15ppm / 30ipm*
SRP	\$795	\$1,595	\$895

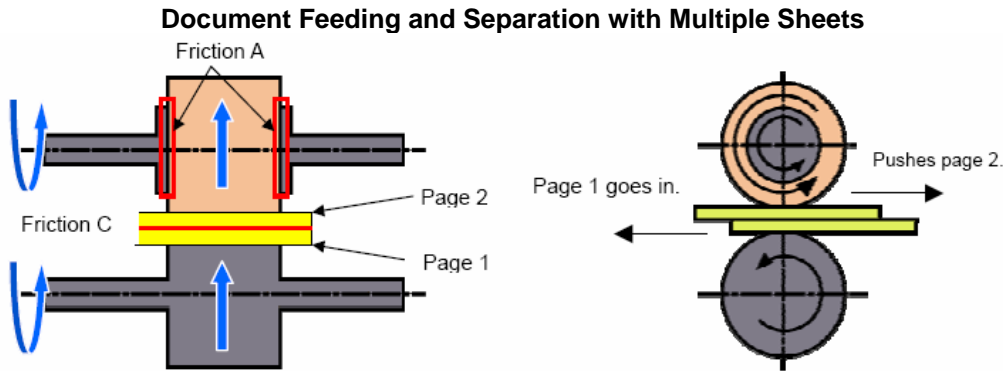
*Scanning Speed in 150 dpi / LTR / portrait

Reliable Paper Feeding Mechanism

The high-precision roller system of the DR-2050C and DR-2050SP ensures smooth, jam-free document feeding each and every time. The main components of Canon's exclusive feed mechanism are a feed roller and a retard roller. The set of document separation rollers, "Retard Rollers" separates consecutive sheets that are being pushed in the opposite directions, minimizing document double-feeds.



When scanning a single sheet document, the Retard Roller, because it is not fixed to its axle, is rotated by the Feed Roller. The rotation of the axle of the Retard Roller is reverse to the rotation of the axle of the Feed Roller. These movements are a result of increased friction of B compared to A.



Conversely, when scanning multiple sheets, friction A becomes the dominant power to rotate the Retard Roller since friction C is less ($\text{Friction A} > \text{C}$). As a result, the Retard Roller begins to invert its rotation, which pushes the second page back to keep the correct scanning sequence.

The Roller & Pad systems used by competitors have no means of pushing page 2 back out of the feed path. Because part of page 2 enters the scanner, there will be an overlap between the bottom part of page 1 and the top part of page 2, resulting in missing image data.

Multisheet forms bound together can also be fed through and reliably scanned with the DR-2050C and DR-2050SP when this separation mechanism is disabled, called Bypass Mode

Additionally, when documents are fed by the Feed Roller, so little pressure is applied to the other side against the Retard Rollers (made up of soft sponge covered with rubber on surface), that documents are less likely to pickup dust during scanning jobs.

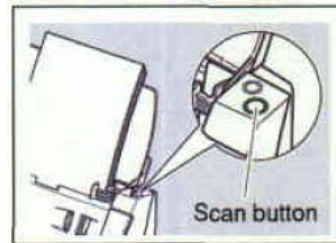
Energy Saving Design

As previously mentioned, the DR-2050C and DR-2050SP utilize an 'array' of multiple, tiny LED lenses as its light source, which requires a much shorter light path and no warm-up time. Overall, this design feature contributes to considerably less energy consumption compared to fluorescent lamps used in competitor scanners.

Scan-To-Job Button Functionality

The DR-2050C and DR-2050SP feature Scan-To-Job functionality, allowing users to pre-set scan settings for one-touch operation. The following Jobs can be programmed and assigned to the "Scan Button" (previously named "Start Button"):

- Scan to PC
- Scan to Printer
- Scan to Mailer
- Application Launcher



Inherited DR-Series Features

The following scan functions and features have become standard among most of Canon's current DR-Series Scanner products and available with the DR-2050C as well.

- ✓ User Preference Registration
- ✓ Advanced Text Enhancement
- ✓ Skip Blank Page
- ✓ Pre-Scan Function
- ✓ Auto Paper Size Detection
- ✓ Automatic Skew Correction
- ✓ Batch Separation Options
- ✓ Text Orientation Recognition
- ✓ Border Removal
- ✓ Edge Enhancement
- ✓ Preset Gamma Curve Function
- ✓ Color Dropout (multi-color dropout not available)
- ✓ Scan Area Setting
- ✓ Folio Function

Simple Connectivity

With plug-and-play USB 2.0 connectivity, easy integration is ensured and installation is simplified.

Recommended USB Interface Card	
Manufacturer:	Product Name:
Adaptec	USB2connect2000LP (AUA-2000) USB2connect3100 (AUA-3100LP) USB2connect5100 (AUA-5100) USB2connect for Notebooks (AUA-1420)

Recommended PC Specifications

The connected PC must be an IBM PC/AT or compatible machine meeting the recommended specifications:

- ✓ Intel Pentium™ 4 CPU 2.8 GHz or higher
- ✓ 256 MB RAM PC processing power or above recommended for optimum throughput
- ✓ High-speed USB 2.0 built-in interface or one of the above recommended interface cards
- ✓ An ISIS or TWAIN compatible application software that works on one of the following operating systems

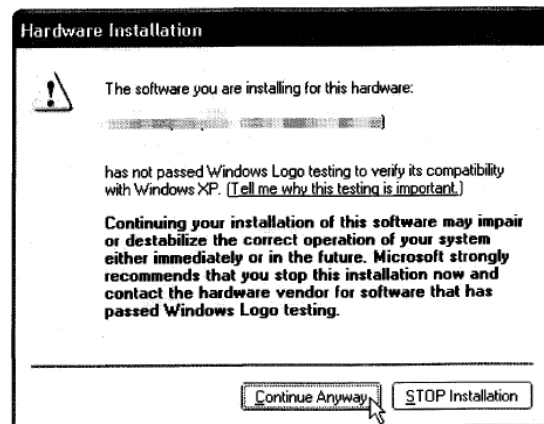
Operating Systems for use with USB interface:

- ✓ Microsoft Windows 98SE
- ✓ Microsoft Windows Me
- ✓ Microsoft Windows 2000 SP3 or later
- ✓ Microsoft Windows XP Pro SP1 or later
- ✓ Microsoft Windows XP Home SP1 or later

WHQL Certification

The DR-2050C and DR-2050SP are WHQL compatible (Window Hardware Quality Lab). WHQL is a Microsoft facility that provides testing services for hardware and drivers for compliance with its Windows Operating Systems. A digital signature is given to those hardware drivers which have been tested and certified by WHQL.

By obtaining the WHQL certification, the dialog box shown here will NO LONGER be displayed.

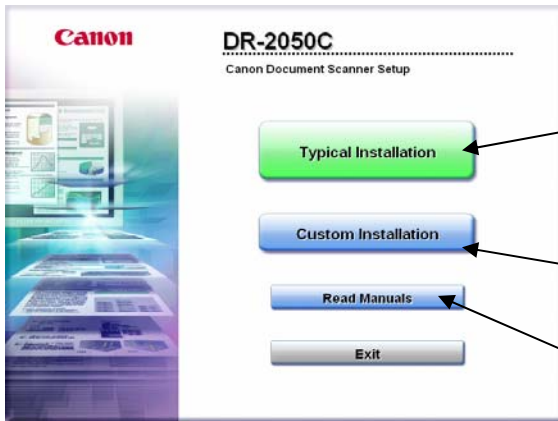


Bundled Software

In addition to a full-featured ISIS/TWAIN driver, the DR-2050C and DR-2050SP come bundled with Canon **CapturePerfect 3.0**, **Adobe Acrobat 8.0 Standard**, and **OmniPage SE 4** software packages. As an out-of-box office scanning tool, the CapturePerfect application was designed to maximize the capabilities of the DR-Series Scanners in scanning, viewing, saving, distributing and printing office documents. Adobe Acrobat is recognized as the most widely accepted application for PDF image file creation.

Easy Installer Tool

In order to streamline the set-up and installation of the DR-2050C and DR-2050SP, an Easy Installer tool will launch automatically from the set-up CD. The user will be guided through the driver and software installation processes, rather than installing the INF file, ISIS/TWAIN drivers, and CapturePerfect 3.0 separately.



Items installed when pressed:

- All Driver including INF files, Job Tools, ISIS/TWAIN driver
- CapturePerfect 3.0

Adobe Acrobat is bundled and install separately in different Setup CD-ROM.

When pressed, the user has options to select which software and/or driver to install.

When pressed, the Easy Start Guide, Users Guide, and CapturePerfect Operating Guide can be read on screen.

CapturePerfect 3.0

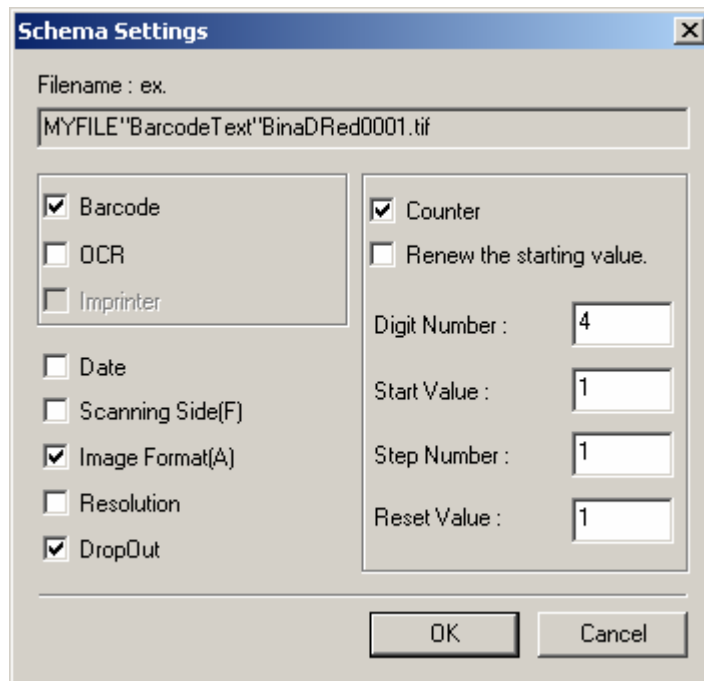
File Format Support

CapturePerfect offers a variety of file saving options for converting office documents into electronic files. The scanned images can be saved in different output file formats (or 'Types'), including TIFF (*.tif), BMP (*.bmp), JPEG (*.jpg), or PDF (*.pdf) files.

Scanning Modes	TIFF	BMP	PDF	JPEG
Binary	Yes	Yes	Yes	No
256-Level Grayscale	Yes	Yes	Yes	Yes
24-bit Color	Yes	Yes	Yes	Yes

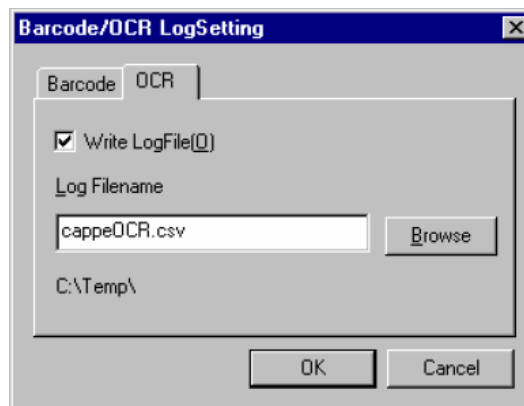
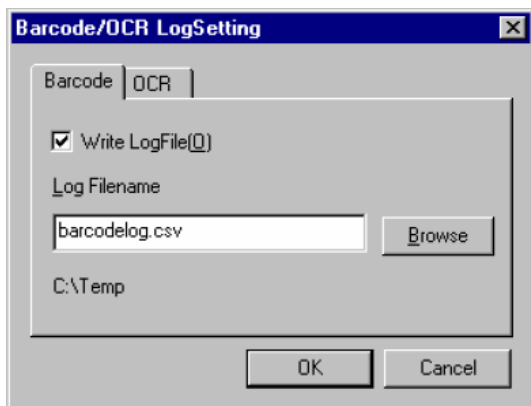
Multi-page vs. Single-page File Format

Multiple images can be saved into a single TIFF or PDF file (as 'Multi-page' file), or the pages can be separated as necessary into multiple single-image files (as 'Single-page' file). When the 'Multi-page' file scanning option is selected with a user-specified 'number of pages' per document or form, a sequential identification number is automatically generated for each file and appended to the shared portion of the file name that was initially given by the user to the batch before scanning. When the 'Single-page' files are created, the system-generated numbers are always appended to the file name, or additional information such as scan settings can also be selectively included in the file names at the 'Schema Settings' dialog box.



OCR Log Files

The results of recognition performed with OCR function can be saved in a log file in the CSV format. As illustrated below, the Write LogFile check box in the appropriate tab of the Barcode*/OCR LogSetting dialog box enables a log file to be named and saved in a designated directory location.



** The barcode tab is not activated on the DR-2050C and DR-2050SP because the optional software barcode module is only compatible with certain DR-Scanner models. Please contact authorized Canon dealers for more information on which DR-Scanner models support the optional software barcode module.*

Scan Functions

CapturePerfect provides users with a number of convenient ways to scan documents for a variety of business imaging needs.

Scan Function	Description
Scan Page	Documents are scanned only one page, i.e., one side of a document at a time. The scanned images can then be saved to a file, sent to a printer or discarded as necessary. Duplex scanning is not available with this option.
Scan Batch to File	In many cases, documents are scanned in batches, and the scanned images are saved either into Multi-page file(s) per batch or separately into multiple Single-page files.
Scan Batch to Printer	As documents are scanned, the scanned data is sent directly to a printer for printing from the document images. The scanned images are not saved after scanning using this option. (Documents can also be printed in CapturePerfect from previously saved image files.)
Scan Batch to Mail	Users can also choose to send scanned images as file attachments to email messages. A MAPI (Microsoft Messaging Application Programming Interface) – compliant email client application program, for example, Microsoft® Outlook®, many popular Internet email applications, or Lotus Notes®, is required on the computer. As with the 'Scan Batch to Printer' option, the scanned images are not saved on the PC after scanning.
Scan to Presentation	The projector connected to the PC displays scanned images in this mode when page after page is loaded on the Paper Feed Tray and scanned during business presentations. Scanned images can optionally be saved when the presentation is closed.
Scan Job	'Scan Jobs' can be pre-registered for routine scan operations or other frequently repeated scan sessions using the same scanning conditions. 'Scan to Mail,' 'Scan to Print,' and 'Scan to PC' operations are available as different types of the Scan Job, and a total of up to 99 Jobs can be registered.

Image File Editing Functions

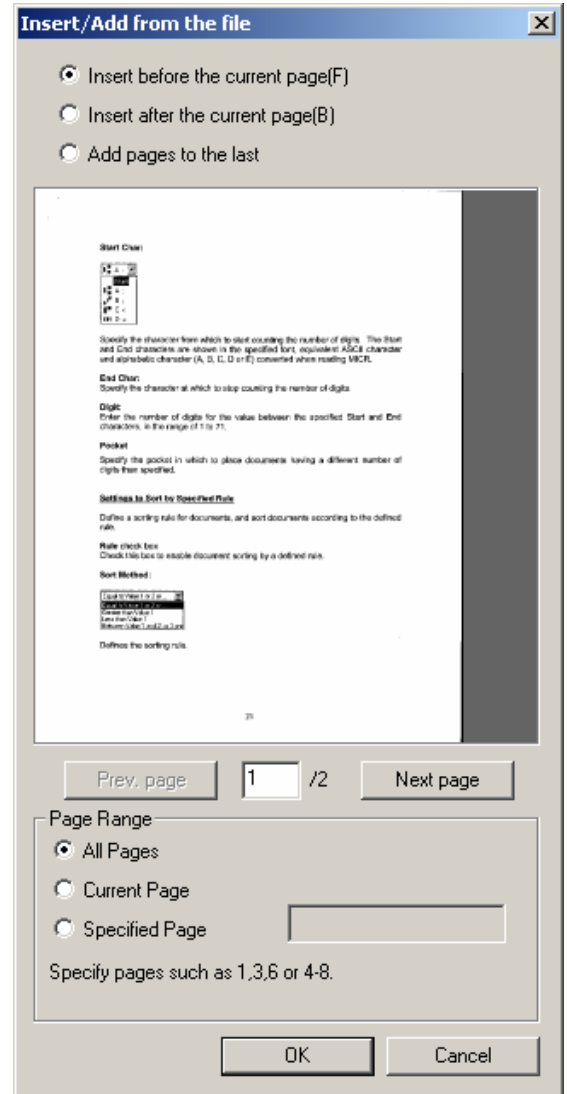
CapturePerfect offers a variety of post-scan image editing capabilities.

For example:

- Brightness/contrast on output images can be adjusted to enhance the image quality.
- New pages, whether from scanning new documents or from an existing image file, can be inserted anywhere in the middle or appended to the end of existing image files once scanned and saved with CapturePerfect.
- Pages can be replaced with new pages, extracted and saved into another file, or permanently deleted as necessary.
- Until any changes are saved, the editing operations can be canceled (“Undo”) or reapplied (“Redo”).
- Part of or the entire displayed image can be selected, as illustrated below, with a rectangle selection below, and then copied onto the clipboard.
- Multiple files can be combined into a single file.



Image Copy Function



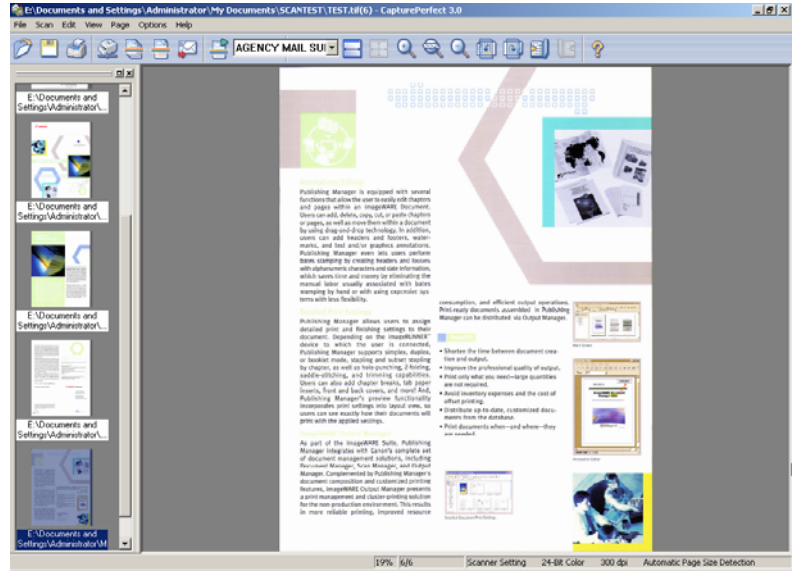
Insert/Add Image Function

Image Display Functions

CapturePerfect offers multiple display options to view scanned images.

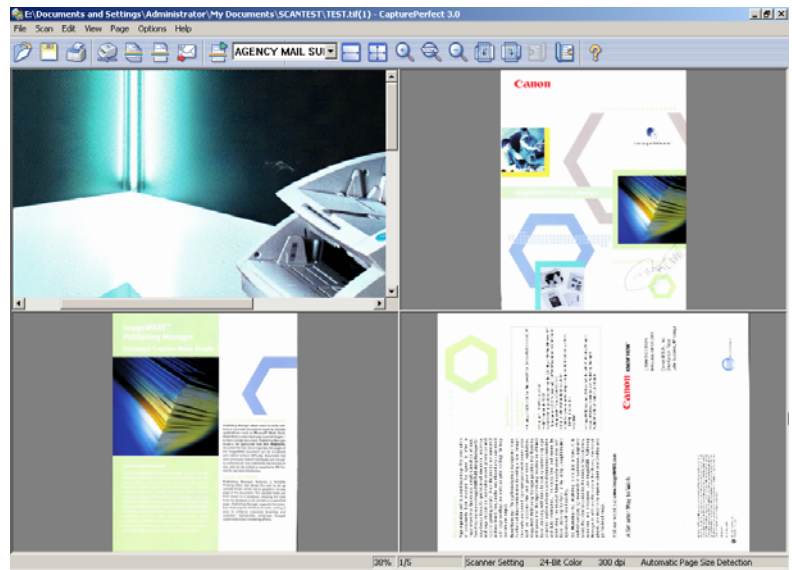
Thumbnail View of Images

When the 'Thumbnail' display option is selected, the thumbnail (reduced) views of opened or scanned images are displayed in the "Thumbnail" window on the left pane of the screen, and the selected thumbnail is displayed in the main 'Image View' window on the right side of the screen. The images in the 'Thumbnail' window can be **'dragged and dropped'** at the users' convenience to be displayed in desired order. This display option helps users to easily navigate through piles of document images, for example, to locate a specific page of interest.



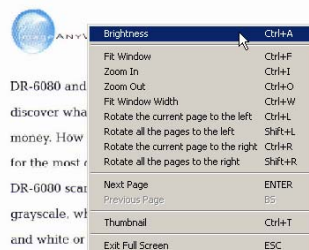
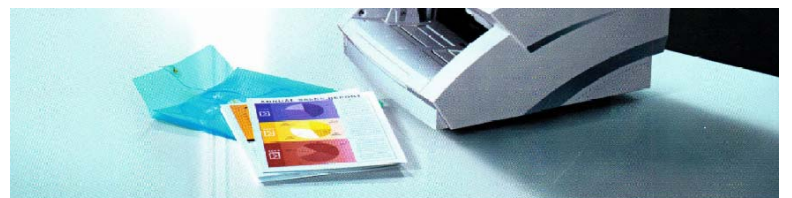
Split View of Images

Users may choose to split the image display window into two or four windows to **view more than a single image at a time**. Scanning operations can be performed while this 'Split View' feature is enabled; other image display functions, such as image magnification, reduction or rotation, are independently applied to each image displayed in each window. The 'Thumbnail Display' option can also be combined with this 'Split View' feature.



Full-Screen View of Images

Images can be viewed at **full screen for business presentations** or on any other image display/exhibit occasion. While in this viewing mode, image display tools (Brightness, Zoom, Rotate, Page Navigation, Thumbnail, etc.) become available when the users right-click anywhere on the currently displayed full screen image.



advanced Canon image sensor technology; they both offer great image quality. And, of course, they provide the legendary Canon reliability you've come to expect. So when it comes to performance, functionality and value, turn to the DR-6080 and DR-9080C scanners, and take advantage of not doing business as usual.

www.usa.canon.com
1-800-OK-CANON

Canon KNOW HOW®

Canon and Canon Know How are registered trademarks of Canon Inc. IMAGEANYWARE is a service mark of Canon U.S.A., Inc. ©2003 Canon U.S.A., Inc. All rights reserved. Canon Electronics Inc. All page-per-minute statistics based on letter-sized documents, portrait-feeding direction at 300 dpi. Actual processing speeds may vary based on PC performance and application software. Contact your Canon representative for minimum OS, hardware and software requirements.

Searchable PDF File Format Support

When documents are scanned into PDF file format in CapturePerfect, the printed character strings within the documents, can be recognized and saved as text data attached to the PDF output files. The **output PDF files with the embedded OCR text then become “searchable”** by a string of text as the search ‘keyword,’ similar to using the Windows ® built-in Search tool. The text contained in these ‘Searchable PDF’ files can also be extracted and copied over into other text application files such as Microsoft® Word® files.

PDF File Security

When scanning with CapturePerfect, security-sensitive documents can be scanned into PDF file format and **password-protected from unauthorized user access for opening, editing or printing**. The PDF files can be **encrypted** either at **40-bit** (‘RC3’ standard) or **128-bit** (‘RC4’ standard) encryption levels, depending on the security requirements and nature of image files. This security functionality is increasingly important to businesses with industry specific government compliance initiatives.

Password Settings

Filename :
E:\Documents and Settings\Administrator\Desktop\PDFE

Password Settings

Password to open document
Document Open Password : [xxxxx]

Password to change authority and password
Permissions Password : []

Authority

Encryption Level [High 128-bit (RC4)]

Forbid users to Print
 Forbid users to Edit

Password Confirmation

Document Open Password : []
Permissions Password : []

OK Cancel

Adobe® Acrobat® 8.0

Adobe® Acrobat® 8.0 Standard software is bundled at no additional cost as an added value with purchase of the DR-2050C and DR-2050SP. Scanner users can take advantage of a variety of plug-in functions and comprehensive software features, such as in electronic form creation, document sharing, connectivity to databases, encryption/security, and electronic signature.

Note: The service support for the bundled Adobe Acrobat software is provided by local service agents from Adobe Systems, Inc. For more detailed information, please refer to the documentation included in the software package.

OmniPage SE 4

OmniPage SE 4 is an entry-level edition of the world's best selling OCR software that allows you to quickly turn paper into editable electronic documents that look just like the original – complete with text, tables and graphics.

Key features of OmniPage SE 4 include:

Accuracy

- ***The Most Accurate Conversion in 119 Languages***
ScanSoft's sophisticated multi-engine voting capabilities deliver unprecedented accuracy in 119 different languages.
- ***Despeckle Module***
Enhancing difficult to read documents improve recognition quality dramatically. The despeckle module reduces background noise allowing colored, shaded and previously unrecognizable documents to be converted with ease.

Formatting

- ***Superior Character Matching***
Matching the individual character attributes ensures your converted documents look as close to the original as possible. Font Matching, font-consolidation, size, bold, italics and color background matching are all improved to cut editing time to a minimum.
- ***Superior Page Analysis***
Before recomposing the layout of a document, the software must first understand all of the objects on the page and their relationship to one another. OmniPage SE offers improved detection of individual page objects, in particular tables. These features ensure tables and spreadsheets, with or without gridlines, are formatted correctly.

Editing and Proofing

- ***Context Specific Correction***
Confirming the accuracy of questionable words is much easier because suspect words are now shown within a wider context of the document's text to facilitate more accurate corrections.
- ***Dynamic Verification***
The proofreading mode provides a more dynamic view of the original document's text image so you do not have to second guess if your corrections are appropriate or not.

Advanced Productivity Features

- **Resolution Control**
Choose your desired resolution for saved images and for images embedded in recognized pages.
- **Adjustable Speed Control**
Customize recognition performance by selecting the speed and accuracy settings that are optimized for your needs.
- **Manual Speed Zoning**
Speed up the manual zoning process by viewing auto-detect zones and double-clicking to select the one you want.
- **OPD Files**
OmniPage SE document files contain training files, user dictionary and zone information to make follow-up OCR sessions faster and easier than ever before.
- **Custom Converters**
Create custom documents according to your business standards. Document output can be tailored for specific attributes so that each time documents are converted to specific programs they have specific properties pre-selected to minimize required completion work in the target application.
- **Direct OCR**
Save time by performing OCR from directly within your favorite program. Use OmniPage SE to place fully formatted text within Word, Excel and many other popular word-processing programs without ever needing to launch OmniPage.

Additional Features

- **Scanner Enhancement Technology (SET) Tools**
SET tools are a robust collection of powerful image correction capabilities, including straighten, contrast adjustment, color conversion, color drop-out and more. They deliver professional enhancement functionality with point & click ease.
- **508 Compliance**
The Americans with Disabilities act requires computer programs to be easily navigated by visually impaired users. This software effectively addresses their needs and is fully compliant with section 508.

Note: For more detailed information, please refer to the documentation included in the software package.

Maintenance

User-Replaceable Exchange Roller

It is recommended that the Feed roller and the Retard roller be replaced periodically, every 30,000 scans

DR-2050C/ DR-2050SP Options and Consumables

Exchange Roller Kit

- Product Code: 7982A001AA
- Details: Feed Roller, Retard Roller x 1pc each
- Exchange: By Users. Recommended at every 30,000 scans

DR-2050C / DR-2050SP Specifications
(Connected to a PC)

No	Item		Specifications		
1	Type		Compact Color Document Scanner		
2	Document Reading	<i>Sensor</i>	CMOS CIS Sensor		
		<i>Optical Resolution</i>	600 dpi		
		<i>Light Source</i>	RGB LED		
3	Scanning Side		Front / Back / Duplex		
4	Scanning Speed (LTR 200dpi Portrait)		B&W: 20 ppm (Simplex) / 40 ipm (Duplex)		
			Grayscale: 20 ppm (Simplex) / 40 ipm (Duplex)		
			Color: 7 ppm (Simplex) / 12ipm (Duplex)		
			Color @ 150 dpi: 10 ppm (Simplex) / 20 ipm (Duplex)		
5	Documents	<i>Size</i>		Auto Separation	Non Separation
			Width	2.2" to 8.50" (55-216 mm)	
			Length	2.76" to 11.7" (70-297 mm)	2.76" to 14" (70-355 mm)
	<i>Weight / Thickness</i>		14 to 32 lb bond	11 to 40 lb bond	
		<i>Long Document Mode</i>	Not available (Firmware need to be upgraded. Customizable)		
		<i>Document Requirements</i>	1) Pressure-sensitive paper: Can be fed face down 2) Carbon-backed paper: Cannot be fed. 3) Perforated paper for binder: Can be fed with 2/3/4 holes of less than 8mm in diameter 4) Curled paper: Can be fed only if curl is 5mm or less. 5) Creased paper: Can be fed, but creases must be straightened before being fed.		
6	Document Storage				
			2) Eject	5mm or less including curls (50 sheets or less with 80g/m document)	
			3) Ejected face direction	Face down	
7	Paper separation		Retard Roller		
8	Output Resolution		100 x 100 dpi, 150 x 150 dpi, 200 x 200 dpi, 240 x 240 dpi, 300 x 300 dpi, 400 x 400 dpi, 600 x 600 dpi		
9	Output Mode		Binary	Black and White/ Error Diffusion/ Text Enhancement	
			Grayscale &	8-bit (256-level) Grayscale	

		Color	24-bit color
10	Interface	USB 2.0	
11	Dimensions	Tray Closed: 11.7" (W) x 3.9" (D) x 7.7" (H) Tray Opened: 11.7" (W) x 5.2" (D) x 12.7" (H)	
12	Weight	Approx. 5 lb	
13	Bundled Software	ISIS/TWAIN Driver, CapturePerfect 3.0, Adobe Acrobat 8.0 Standard, OmniPage SE 4	
14	Option	None	
15	Consumable	Exchange Roller Kit (Feed, Retard rollers)	
16	Daily Duty Cycle	Approx. 700 scan / day	

Note: The specifications are subject to change without notice

DR-2050SP Specifications
(Connected to a Projector)

No	Item	Specifications	
1	Scanning Modes	Simplex/ Duplex/ Color (24-bit)	
2	Optical Resolution	150 dpi (Fixed)	
3	Scanning Speeds* (LTR Portrait @ 150 dpi)	Simplex	Duplex
		6 ppm	6 ipm
4	Output Signal	SXGA (1,280 x 1,024), XGA (1,024 x 768), SVGA (800 x 600); Automatic	
5	Interface	Analog RGB output, USB Memory Slot, USB 2.0 (for Scanning mode only), Infrared communication, Remote control infrared	
6	Included Accessories	Remote Control, Batteries, VGA Cable	

Note: The specifications are subject to change without notice

Competitive Overview

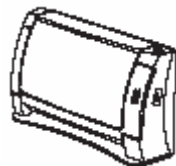
		Canon DR-2060C	Fujitsu fi-4120C2	Fujitsu fi-4220C2	Fujitsu fi-5110C	HP ScanJet 8260	HP ScanJet 8290	Vicioneer Strobe 460X PDF	
1	Characteristic	Workgroup							
	Category	Workgroup							
	Color	O							
2	Duplex	O							
	Flatbed	X							
	Scanning Size	ADF (W x L)	Min. 55 x 70mm Max. 215 x 355 mm	53 x 74 mm 215.9 x 355.5 mm	53 x 74 mm 215 x 355.5 mm	53 x 74 mm 215 x 355.5 mm	89 x 152 mm 216 X279 mm (Legal size)	89 x 152 mm 216 X279 mm (Legal size)	50 x 90 mm (Business card) 216 X279 mm (Legal size)
		FB (W x L)	None (Firmware needs to be upgraded)	up to 854mm	215 x 297 mm	Maximum up to 854mm	-	-	-
3	ADF	Capacity	50 sheets or 5mm		50 sheets	50 sheets	50 sheets	50 sheets	
	Maximum Width	216 mm		216 mm	216 mm	216 mm	216 mm	216.9 mm	
4	Scanning Speed (A4/Front, 200dpi)	20ppm / 38ipm		25 ppm / 50 ipm	15 ppm / 30 ipm	15 ppm / 30 ipm	25 ppm / 16 ipm	20ppm / 30ipm	
	Grayscale	20ppm / 38ipm		25 ppm / 50 ipm	15 ppm / 30 ipm	15 ppm / 30 ipm	-	-	
	Color	7ppm / 12ipm (100dpi: 18ppm/34ipm)		25 ppm / 50 ipm (150dpi)	15 ppm / 30 ipm (150dpi)	-	16 ppm / 6 ipm (150dpi)	-	
5	Optical Resolution	600 dpi		600 dpi	600 dpi	4800 dpi	4800 dpi	600 x 1200 dpi	
	Output Resolution	Range: 100 / 150 / 200 / 240 / 300 / 400 / 600 dpi Unit: Fixed at selections above		50-600 dpi Possible to set by 1dpi at range above	50-600 dpi Possible to set by 1dpi at range above	72-4800 dpi	72-4800 dpi	75-2,400 dpi	
7	Grayscale	8 bit		Internal 10 bit / Output 8bit	Internal 10 bit / Output 8bit	-	-	Internal 16bit / Output 8bit	
8	Color	24bit RGB 8bit each		24bit RGB 8bit each	24bit RGB 8bit each	24 bit	24 bit	Internal 48bit / Output 24bit	
9	Dropout Color	O B/G/B (Enhancement)		O B/G/B	O B/G/B	-	-	O B/G/B	
	Switch among RGB	O		O	O	-	-	-	
10	Interface	Standard USB2.0		SCSI-HI / USB2.0	USB2.0	USB2.0	USB2.0/SCSI	USB2.0/USB1.1	
	Option Slot	-		-	-	-	-	-	
	Machine Size (mm) (W x D x H)	298 x 100 x 197 mm		301 x 168 x 158 mm	302 x 569 x 229 mm	293.5 x 168 x 130 mm	574 x 399 x 195 mm	575 x 399 x 196 mm	338 x 152 x 310 mm
12	Weight	2.5 kg		3.5 kg	8 kg	2.7kg	6.6kg	8.6kg	
13	Energy Star	O		O	O	O	O	X	
14	Driver	- ISIS - TWAIN		- ISIS - TWAIN	- ISIS - TWAIN	- ISIS - TWAIN	- ISIS - TWAIN	- ISIS - TWAIN	
15	Key Applications Software	- CapturePerfect 3.0 - Adobe Acrobat 7.0		- ScanAI21 - Adobe Acrobat 7.0	<<<	- VRS software - HP Photo & Imaging software - Adobe® Photoshop® Elements - Adobe Acrobat Reader® - NewSoft® Presto! BizCard Reader - IRIS Readiris Pro - ScanSoft PaperPort Deluxe - ScanSoft OmniForm	- VRS software - HP Photo and Imaging software with HP Share-to-Web software and HP Memosolve Disc Creator - HP Smart Copy Utility - Adobe Acrobat Reader - NewSoft® Presto! BizCard Reader (Macintosh version in English only) - Readiris Pro OCR software - Adobe Photoshop Elements (in English only for Macintosh) - ScanSoft PaperPort Deluxe - ScanSoft OmniForm - NBI OneStep	- ScanSoft PaperPort Deluxe 5.0 - ScanSoft TextBridge Pro 9 OCR - Pixel QuickScan 3.0 (demo version) - ArcSoft PhotoImpression	
		- OmniPage SE							
16	Option			- Imprinter - Image Processing Software Option	-	- Image Processing Software Option			
17	Consumable	- Exchange Roller kit (every 30k)		- Pad Unit (every 50k) - Pickup Roller Unit (every 100k) - Cleaning Kit	<<<	- Pad Unit (every 50k) - Pickup Roller Unit (every 100k) - Cleaning Kit			
18	Price	Japan	Yen 64,800		Yen 120,000	Yen 240,000	Yen 90,000		
		USA	\$900		\$1,995	\$1,995	\$895		
		Europe	Euro800				\$900	\$1,499	
19	Daily Duty Cycle	700 sheets		up to 2,000 sheets	<<<		1,000 sheets	500 pages	
20	Notes			- Exchangeable Background color (Black/White) - Double feed detection (Length/Thickness by Optical sensor) - Card scanning	<<<	- Double feed detection (Length/Thickness by Optical sensor)		Similar models available as ... Xerox DocuMate262 Kodak 130/140 Avision AV-220	

UNKNOWN

Based on information publicly available as of 5/05

DR-2050C Packaging

Items Included in the Box
DR-2050C Main Body
Start-up Manual
Registration Card (US and Canada only)
AC Adapter
DR-2050C Set-up Disc (CD-ROM)
Warranty Card (US and Canada only)
USB Interface Cable
Power Cord
Adobe Acrobat Set-up Disc (CD-ROM)
Document Guide Adapter
Adjustment Sheet (Shading Sheet)
Feed Roller



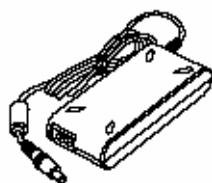
DR-2050C Main Body



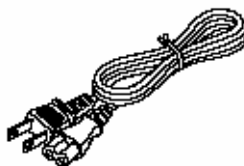
Start-up Manual



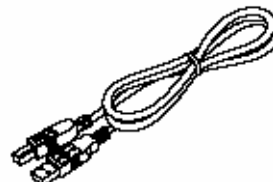
Registration Card



AC Adapter



Power Cord



USB Interface Cable



Document Guide Adapter



DR-2050C Set-up Disc



Adobe Acrobat Set-up Disc



Adjustment Sheets



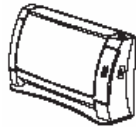
Warranty Card



Feed Roller

DR-2050SP Packaging

Items Included in the Box
DR-2050SP Main Body
Start-up Manual
Registration Card (US and Canada only)
AC Adapter
DR-2050SP Set-up Disc (CD-ROM)
Warranty Card (US and Canada only)
USB Interface Cable
Power Cord
Adobe Acrobat Set-up Disc (CD-ROM)
Document Guide Adapter
Adjustment Sheet (Shading Sheet)
Feed Roller
User's Guide Presentation Mode Edition
Remote Control
AAA Batteries (2)
RGB Cable Mini D-sub 15-pin x 2(Length: 5ft)



DR-2050C Main Body



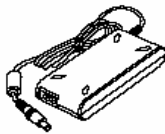
Start-up Manual



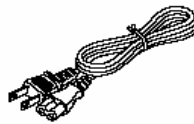
Registration Card



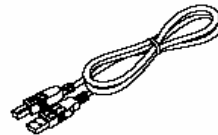
Document Guide Adapter



AC Adapter



Power Cord



USB Interface Cable



DR-2050SP Setup Disk



User's Guide Presentation Mode



Adjustment Sheets



Warranty Card



Adobe Acrobat Setup Disk



Feed Roller



Remote Control



AAA Batteries (2)



RGB Cable

Systems Support And Services Information

Technical Support for DR-Scanner Authorized Servicers

In the event assistance is required by a Canon Authorized Servicer for the support of the DR-2050C and DR-2050SP, Canon USA's Technical Support Center will provide support and problem escalation. The Technical Support Center will provide second level support for Authorized DR-2050C and DR-2050SP Servicers only. A valid Support ID and DR-2050C or DR-2050SP serial number is required to access the Technical Support Center. Hardware support is available Monday through Friday, 9:00am-8:00pm Eastern Time and software and connectivity support is available Monday through Friday, 9:00am-6:00pm Eastern Time. Please see the DR-2050C or DR-2050SP Service Guide for complete details. If you are not an authorized servicer for DR products, please contact your Canon representative should you wish to become authorized.

End User Product Support

In the event assistance is required by an end user for the support of the DR-2050C or DR-2050SP, a reseller or end user can contact the Canon USA Help Desk (CITS) at 1-800-423-2366. CITS works at the Canon Call avoidance center with the objective to reduce the number of onsite service visits. CITS will take the first call from resellers and end users and provide comprehensive support as follows:

- Answer product related questions
- Provide pre- and post-sales support including purchase recommendations
- Perform troubleshooting
- Assist with set-up and testing the unit
- Reload software and drivers
- SCSI card recommendations

Canon World Wide Web Site

Another service available through Canon U.S.A. support is the Canon World Wide Web site. In addition to providing information on all Canon products, an area is provided for download of the latest versions of the drivers.

The Canon USA World Wide Website, is located @ <http://www.usa.canon.com>.

Internet Systems and Technical Support

Canon USA's Systems and Technical Support Division provides high quality e-Support via the internet and is only available for Canon USA Authorized Services. Canon e-Support is designed to give Authorized Servicer Technicians access to technical support information via the Worldwide Web. Please refer to the DR-2050C or DR-2050SP Service Guide for details.

Service Training and Authorization Policy

Please refer to the DR-2050C or DR-2050SP Service Guide.

Canon U.S.A Limited Warranty Conditions

Please refer to the DR-2050C or DR-2050SP Service Guide.

Brochure Ordering

To obtain information concerning the availability, pricing and order forms for Canon DR Scanner brochures, please see Canon's marketing website.

Online Sales Support Materials

Canon U.S.A., makes a wide variety of Sales Support materials available to sales personnel designed to aid in the positioning and sale of Canon solution offerings. These items are frequently updated, with new items made available on a continual basis.

To receive the latest information concerning these support tools, please access the Canon's marketing website.

Online Sales Training

A comprehensive web-based sales training module on the DR-2050C is available on Canon's marketing website. And a additional training module on the Presentation Mode for the DR-2050SP.

DR-2050C/ DR-2050SP Release Letter Revision History

Version 1.0

- Replaces the DR-2050C Version 2.0 Release Letter
- Addition of the DR-2050SP information.

Version 1.1

- Price list update with new Item Codes to reflect change in software bundle to Adobe Acrobat 8.0 Standard (p. 4)
- DR-2050C / SP Release Letter updated to reflect change in bundled software to Adobe Acrobat 8.0 Standard (p. 3, 4, 6, 19, 23)