

# Kodak

Service & Support

[www.kodak.com/go/docimaging](http://www.kodak.com/go/docimaging)

© Kodak, 2008. Kodak, Digital Science, Imagelink and Kodak ScanMate are trademarks of Kodak. PowerFilm is a trademark of InfoCap Technologies, used under license by Kodak.

A-5731

July 2008

# Kodak

---



# Kodak

Document Imaging  
Products



**Kodak**

## CONTENTS

Introduction	2
Kodak's Innovative Technology	2-4
Interfaces and Drivers	5
<b>MULTIPURPOSE NETWORK SCANNERS</b>	
Kodak Scan Station 100	6-7
<b>DOCUMENT SCANNERS</b>	
Kodak ScanMate i1120 Scanner	8-9
Kodak i30 and i40 Scanners	10-11
Kodak i1200 Series Scanners	12-13
Kodak i1300 Series Scanners	14-15
Kodak i100 Series Scanners	16-17
Kodak i1400 Series Scanners	18-19
Kodak i600 Series Scanners	20-21
Kodak i780 Scanner	22-23
Kodak i1800 Series Scanners	24-25
Kodak Capture Pro Software	26-27
<b>SYSTEMS AND SOLUTIONS</b>	
Kodak Check Imaging	
Kodak i6000 Series Check Scanners	28-29
Kodak t6000 Client and Server Software	30-31
Kodak s1220 Photo Scanning System	32-33
Kodak s1740 Capture System	34-35
<b>REFERENCE ARCHIVING</b>	36
Kodak i9600 Series Writers	36-37
Kodak Reference Archive Media	38
Kodak i9600 Application Software Kit	38-39
Electronic Microimaging From Kodak	39
Kodak i7300 Scanner;	
Kodak i7300 Scanner Application Software	
Kodak Image Server Software	40-41
Kodak 2400DSV-E/3000DSV-E	
Digital Scanner-Printers	42-43
PowerFilm Application Software	
for the i7300 and DSVs	44
<b>Kodak Service &amp; Support</b>	45

## Innovation You Can Count On— The World of Document Imaging From Kodak

With over 75 years of expertise and a legacy of document imaging innovation, Kodak is your partner of choice for modern document imaging technology. Kodak offers the broadest range of scanners and integrated imaging equipment on the market. Our quality standards are exceptional, and our performance is well established—based on input and feedback from customers like you. Kodak develops innovative technologies, ranging from paper separation, document transport and multi-feed detection features to CCD sensors and image enhancement, along with advanced and easy-to-use solutions for reference archiving. And the quality of our media is world-renowned.

### Kodak Scanners Feature Innovative Technology

- Automatic document feeders (ADF) as standard
- ADF capacities of 50 to 500 pages
- Handle an extremely wide range of document sizes and types
- Scanning speeds of 20 to 800 images per minute
- Scanning in simplex (one-sided) and duplex (two-sided) modes
- Scanning in bitonal, grayscale and color
- Dual stream image output
- Standard SCSI-2, USB 2.0, IEEE-1394 (**FireWire**), Ethernet or interfaces
- Perfect Page scanning for exceptional image quality
- Ultrasonic multi-feed detection on most scanner models
- Imaging of long and irregularly shaped documents (i1440 scanners)
- A4- and A3-size “tethered” flatbeds (i1200, i1300 and i1400 Series) are available with optical resolution up to 1200 dpi
- A wide range of accessories and options
- Optical resolution up to 600 dpi

## Reference Archiving Solutions, Only From Kodak

- Reference archive products from Kodak help protect your business from fraud, loss and litigation
- Combines micrographic storage and digital access
- Creates a whole new method of archiving—media that can be stored indefinitely yet accessed almost instantly
- **Kodak i9600 Series Writers**, the **Kodak i7300 Scanner** and related products create peace of mind, total-access solutions



## Innovative Scanner Technology From Kodak

### Advanced features available on most models of Kodak Scanners:

#### Perfect Page scanning

Processes even the most difficult original documents with consistently high quality, and dynamically sets brightness and contrast for each document in a batch. Functions such as the automatic alignment of documents (deskew) and imaging to the actual paper format (contour tracing and cropping) ensure the best-possible representation of scanned documents. Perfect Page scanning allows you to scan a wider range of documents without presorting, changing scanner settings, or post-image processing for high productivity.



#### Dual stream image output

Kodak's CCD sensors produce two images of each scanned document page: bitonal and color or bitonal and grayscale, so you can use applications that process two images simultaneously. Plus, dual stream output makes it easier to migrate to color scanning applications.

#### SurePath paper handling

Our automatic document feeders accept and feed batches of mixed paper sizes and weights. Our very reliable, document transport technology treats your originals with care and ensures that they reach the output tray in optimal condition and in the correct order.

#### Ultrasonic multi-feed detection

The ultrasonic multi-feed detection developed by Kodak is extremely reliable and detects glued or stapled documents as they are fed into the scanner. Because the latest innovations are used, ultrasonic technology is far superior to conventional multi-feed detection methods.

#### Precision lenses

Lens technology is part of Kodak's legacy. With over 150 years of experience in this area, Kodak produces lens systems for scanners that are virtually unbeatable.

#### Optics/CCDs

Kodak's image sensors have their origins in space technology. They deliver optimal image quality in bitonal, grayscale and color.

## Interfaces and Drivers

### SCSI interface

The ANSI standard interface covers several different interfaces and connectors. Ranges from SCSI-1 with an 8-bit bus and data rates of 4 Mbps to wide ultra 2 SCSI with a 16-bit bus with data rates of 80 Mbps (megabits per second).

### USB 2.0 interface

Up to 40 times faster than USB 1.1, the USB 2.0 interface is backward compatible with existing USB technology, and enables scanners to be connected using plug-and-play technology. The USB 2.0 serial bus enables data transfer rates up to 480 Mbps.

### IEEE-1394 (FireWire) interface

The IEEE-1394 interface, commonly known as **FireWire**, enables scanners to be connected using plug-and-play technology and allows for real-time transmission speeds of 100, 200, or 400 Mbps, compared to 12 Mbps for USB 1.1. **FireWire** also uses autoconfiguration to eliminate ID conflicts, and is expandable for up to 63 devices on the same **FireWire** bus.

### Ethernet (100 Base T) interface

Up to 100 times faster than 10 Base-T, the 100 Base-T interface enables scanners to be connected to a local area network (LAN) via its own IP address. The 100 Base-T Ethernet interface supports data transfer rates up to 100 Mbps.

### TWAIN and ISIS drivers

Indispensable for integration in various scanner applications, **TWAIN** and **ISIS** drivers are bundled with most **Kodak** Scanners.

# MULTIPURPOSE NETWORK SCANNERS

## Kodak Scan Station 100

### Easily scan and send documents across the hall or around the world—with one product

Scan to e-mail, to network folders and printers, to FTP locations, to portable USB drives, to fax (with accessory), to searchable PDF—with just one product!

Robust, reliable and compact, this unit is really a document sharing solution. It works within your existing network infrastructure, and there's no need to purchase additional hardware or software.

Innovative and intuitive, a color LCD touch screen makes it easy for anyone in your office to send documents to multiple network destinations, simultaneously. Today's Scan Station 100 is more innovative, flexible and intuitive than ever. It supports a much wider range of printers and printer configurations, and features multiple file naming options—from preset prefixes to completely interactive naming.

Now you get a free 30-day trial of NSi **Autostore** Express. It's easy-to-use software that lets you—

- Immediately output scans to multiple document systems
- Increase security with device-level user authentication
- Preview scanned images with fingertip control of rescan, image rotation and more
- Index documents when you scan

Learn more from your sales representative or by visiting [www.nsius.com](http://www.nsius.com).

New productivity advantages are ideal for offices needing to handle many types of paperwork efficiently:

- Eliminate mailing, faxing and filing of paper
- Scan both sides of documents simultaneously
- With the **Kodak Scan Station 100 Fax Modem Accessory**, scan images and send them to a fax machine or receive a fax and send it to a network folder and/or printer
- Scan documents in color, black-and-white or grayscale at speeds up to 50 images per minute
- Scan everything from business cards to 34-inch-long documents
- Scan documents with multiple pages and create single-page PDFs
- Multi-task with amazing ease
- Security features



Enjoy exclusive benefits you can only get from Kodak:

- On-screen color preview for real-time confirmation of image capture
- Exceptional image quality with Perfect Page image processing
- Built-in USB portable drive connectivity for image storage and user configuration profiles
- Rotatable touch screen for ease of use and ergonomic operation
- Special document feeder for front-feed, front-return scanning of identification cards and other small or thick documents

### Scan Station 100 technical specifications

Output methods	Scan to network share, scan to print, scan to fax, scan to portable USB drive, scan to FTP (anonymous, authenticated, with proxy support)	
Network protocols	TCP/IP, SMB, authenticated SMTP (login, plain text, CRAM, NTLM), DHCP (for static), NT domain authentication	
Security features	PDF private key encryption, optional pin code access, activity logging, option to enable/disable the ability to scan to portable USB drives	
Paper feeding	ADF 50-sheet capacity; special document feeder included for front-feed, front-return single document feeding	
Document sizes (ADF)	Max	215 mm x 863 mm (8.5 in x 34 in)
	Min	Single-sheet feeding 50 mm x 87.5 mm (2.0 in x 3.5 in) Multiple-sheet feeding 75 mm x 125 mm (3.0 in x 5.0 in)
Scanning speed	Simplex	25 ppm
Bitonal, A4, 200 dpi, portrait	Duplex	50 ipm
Scanning speed	Simplex	25 ppm
Color, A4, 200 dpi, portrait	Duplex	40 ipm
Imaging features	Perfect Page scanning, deskew, autocrop	
Minimum PC configuration of bundled Scan Station 100 configuration organizer software	<b>Pentium 3</b> processor, 1 GHz or higher, 512 MB RAM, USB 1.1 or 2.0, running <b>Windows XP</b> or <b>Windows 2000</b>	
Optical/output resolution	75, 100, 150, 200, 240, 300, 400 and 600 dpi	
Output formats	Single and multipage TIFF, JPEG, PDF, searchable PDF and encrypted PDF	
Recommended portable USB drive specs	USB 2.0, minimum size for configuration: 32 MB, minimum size for storing images/files: 128 MB	
Dimensions (H x W x D)	287 mm x 597 mm x 338 mm (11.3 in x 23.5 in x 13.3 in)	
Weight	18.1 kg (40 lbs)	
Recommended daily scanning volume	Up to 1,000 pages	
Accessories available	Portable USB drives, <b>Kodak Scan Station 100 Fax Modem Accessory*</b>	

(ppm = pages per minutes, ipm = images per minute, dpi = dots per inch)

**Multi-Year Service Options Available, Featuring FE-Assisted AUR (Field Engineer-Assisted Advanced Unit Replacement) With Help Desk Support and Next-Business-Day Response**

\* Scan Station 100 units with serial numbers higher than 45325000 are fax modem-ready; older models may be upgraded through **Kodak Service & Support**

## DOCUMENT SCANNERS

### Kodak ScanMate i1120 Scanner

#### A great way to start capturing documents digitally

It's exceptional, intuitively easy scanning for offices and workgroups—even for those who have never scanned before. The **Kodak ScanMate i1120 Scanner** is small, fast and powerful, featuring 20 page per minute/40 image per minute duplex productivity. It's ready to tackle up to 1,000 pages per day and scan at the touch of a button, thanks to Smart Touch functionality. A single button sends scanned documents to any of nine "scan-to" destinations, including e-mail, print, file, or desktop applications in a variety of popular formats, such as PDF, TIFF, JPEG, RTF or searchable PDF.

Users can take advantage of features found on higher-volume scanners from Kodak, including Perfect Page technology, to create high-quality images automatically—first time, every time. Scans can look as good—or better—than originals:

- iThresholding—evaluates and auto adjusts each document in real time for highest quality image
- Auto crop—provides only the actual document, not extraneous background areas
- Deskew—straightens docs, front and back, without losing any information
- Color drop-out—improves forms processing and text recognition
- Brightness and contrast control—adjusts for maximum legibility
- Blank page detection/drop out—auto deletes blank pages

Scan documents up to 34 inches long. No other scanner in the class goes beyond legal size! There's even a choice of output formats via dual stream scanning to create up to four images from one pass through the scanner.

Software is included for fast information capture and management, along with accurate text recognition (OCR) and business card capture. And when you begin, setup is fast and easy, thanks to plug'n play USB 2.0 connectivity. There's support for various **Windows** Software versions, common to most office systems, including **Windows Vista SP1 (32-bit)**, **Windows XP SP2**, **Windows 2000 Professional SP4**.

The **ScanMate i1120 Scanner** delivers great value, productivity and ease. It's small but powerful, easy to use, with superior image quality. All this at a very pleasing price and ideal for first-time document imaging users.

### ScanMate i1120 technical specifications

Paper feeding	ADF 50-sheet capacity
Document sizes	Max 215 mm x 863 mm (8.5 in x 34 in) Min 50 mm x 63.5 mm (2 in x 2.5 in)
Card scanning	Supported
Scanning speed	B&W simplex/duplex or color simplex/duplex Up to 20 ppm/40 ipm at 200 dpi
Imaging Features (in the scanner)	Perfect Page scanning; iThresholding; adaptive threshold processing; Smart Touch functionality; automatic image straightening (deskew); automatic border removal (autocrop); relative cropping; aggressive cropping; image rotation; electronic color dropout; dual stream scanning; image edge fill; blank page removal; interactive color adjustment; brightness and contrast adjustment
Control panel	9 smart touch "scan-to" destinations: send documents to file, e-mail, printers, fax printers or desktop applications that support TIFF, JPEG, RTF, PDF and searchable PDF
Bundled software	<b>Nuance ScanSoft PaperPort or Nuance ScanSoft PaperPort Pro (Asia), Nuance ScanSoft OmniPage, Presto! BizCard 5</b>
Optical resolution	600 dpi
Output formats	Bitonal, grayscale, color
Drivers	TWAIN, WIA and STI
Interface	USB 2.0 (cable included)
Supported operating systems	<b>Windows Vista SP1 (32-bit), Windows XP SP2, Windows 2000 Professional SP4</b>
Dimensions (H x W x D)	147.5 mm x 300.6 mm x 157 mm (5.8 in. x 11.8 in x 6.2 in)
Weight	2.7 kg (5.9 lbs.)
Recommended daily scanning volume	Up to 1,000 pages

(ppm = pages per minute, ipm = images per minute, dpi = dots per inch)

**Service Offerings: 1-year AUR (Advanced Unit Replacement) and Next-Business-Day Response. Optional 2-year AUR warranty extension.**



## Kodak i30 and i40 Scanners

### Speed, simplicity and advanced imaging for workgroup applications

At very pleasing price points, **Kodak** i30 and i40 Scanners bring exceptional image quality, productivity and ease of use to those in small offices and small-group applications. Advanced imaging for the desktop includes the simplex i30 scanner with color, grayscale, and bitonal capabilities at up to 25 pages per minute; and the i40 scanner, adding duplex scanning at up to 50 images per minute. Both models are packed with features and benefits leveraged from higher-volume **Kodak** Scanners. The i30 and i40 scanners include:

- Perfect Page scanning to increase productivity by dramatically reducing the need for rescans
- Automatic image cropping and straightening at full scanning speed
- Brightness and contrast controls to customize color output for specific applications
- Fast USB 2.0 interface for plug'n play connectivity and rapid transfer of images
- Industry-standard **ISIS** and exclusive Kodak-developed **TWAIN** drivers to achieve rated speeds and easy integration
- Professional-level software bundle includes **Kodak** Capture Software, Lite, **ReadIris** Pro Corporate Edition
- Special document feeder (i40 scanner only) makes it easy to scan ID cards, credit cards, etc.; unique front-feed and front-return of documents
- One-button functionality allows you to assign up to nine scanning applications and select one at the touch of a button

### i30/i40 technical specifications

Paper feeding	ADF 50-page capacity	
Document sizes	Max	215 mm x 863 mm (A4) (8.5 in x 34 in)
	Min	Single-sheet feeding: 50 mm x 87.5 mm (2 in x 3.5 in)
		ADF feeding: 87.5 mm x 125 mm (3.5 in x 5 in)
Scanning speed	Bitonal, grayscale	Up to 25 ppm/50 ipm
A4, 200 dpi, portrait	Color	Up to 25 ppm/40 ipm
Imaging Features (in the scanner)	Perfect Page scanning, autocrop, deskew, electronic color dropout, brightness and contrast controls, multi-feed detection, VRS compatible	
Bundled software	<b>Kodak</b> Capture Software, Lite, <b>ReadIris</b> Pro Corporate Edition	
Optical/output resolution	600 dpi/75-600 dpi, selectable	
Output formats	Bitonal, grayscale, 24-bit color	
Interface/drivers	USB 2.0 (cable included), <b>TWAIN</b> and <b>ISIS</b> (bundled)	
Dimensions (H x W x D)	162 mm x 337 mm x 168 mm (6.4 in x 13.2 in x 6.6 in)	
	Weight	i30 3.6 kg (7.9 lbs) i40 4.1 kg (9 lbs)
Recommended daily scanning volume	Up to 1,000 pages	

(ppm = pages per minute, ipm = images per minute, dpi = dots per inch)

**Performance Plus Service Offerings: Multi-Year Service Options and Support/Enhancement Services Available**



## Kodak i1200 Series Scanners

### The ultimate power tools for office and workgroup productivity

If your workgroup demands the ultimate combination of speed, price and uniquely useful features, discover the new **Kodak i1210** (simplex) and **i1220** (duplex) Scanners. Now take advantage of Smart Touch functionality: just push one scanner function button to launch one of nine scanning configurations, delivering preset scanner settings along with a variety of output formats and destinations. These include scan to applications, PDF, TIFF or JPEG, disk, e-mail, fax and printer.

Our unique tilt-and-scan feature offers two scanning positions:

- Flat with trays extended for higher batch scanning volumes
- Fully upright with the input tray folded down for transaction feeding

There's also optional A3 and A4 size tethered flatbed accessories, long (up to 863 mm/34 in) and small (ID-card size) document feeding, searchable PDF output, full integration with **Kodak Capture Software** and all the high-end features you've come to expect: enhanced Perfect Page image processing, ultrasonic multi-feed detection, 600 dpi optical resolution, up to 30 ppm, plus a very compact footprint.

If you're looking to add new power for your office or workgroup, you've found the greater productivity and unique features you need right here.



## i1200 Series technical specifications

Paper feeding	Up to 75 sheets of 75 g/m <sup>2</sup> (20 lb) paper; handles small documents such as identification cards	
Document sizes	Max	215 mm x 863 mm (8.5 in x 34 in)
	Min	50 mm x 63.5 mm (2.0 in x 2.5 in)
Scanning speed Portrait, letter size	Bitonal/grayscale/color: up to 30 ppm/60 ipm at 200 dpi	
Bundled software	<b>TWAIN</b> and <b>ISIS</b> drivers; <b>Kodak Capture Software, Lite</b> ; <b>Nuance ScanSoft OmniPage</b> and <b>PaperPort</b> (or <b>PaperPort Deluxe 9</b> for Asian countries)	
Optical resolution	600 dpi (i1210/i1220 and optional A3/A4 flatbed accessories) 1200 dpi (A4 flatbed accessory)	
Output resolution	75, 100, 150, 200, 240, 300, 400, 600 and 1200 dpi	
Imaging features (in the scanner)	Perfect Page scanning; iThresholding; adaptive threshold processing; deskew; autcrop; relative cropping; aggressive cropping; electronic color dropout; dual stream scanning; interactive color, brightness and contrast adjustment; auto orientation; automatic color detection; background color smoothing; Smart Touch functionality	
Interface	USB 2.0 (cable included)	
Supported operating systems	<b>Windows Vista</b> SP1 (32- and 64-bit), <b>Windows Server 2003</b> (32- and 64-bit), <b>Windows XP SP2</b> (32- and 64-bit), <b>Windows 2000</b> Professional SP4 (32-bit), <b>Linux SUSE v10.1+</b> (32-bit), <b>Linux Fedora v7+</b> (32-bit), <b>Linux Ubuntu v6.06+</b> (32-bit)	
Recommended PC configuration	For documents up to 356 mm (14 in) long at 400 dpi: <b>Pentium 4</b> , 3.2 GHz processor, 512 MB RAM For documents up to 660 mm (26 in) long at 400 dpi: <b>Pentium 4</b> , 3.2 GHz processor, 1 GB RAM For longer documents/higher resolution: <b>Pentium 4</b> , 3.2 GHz processor, 3GB RAM	
Dimensions (H x W x D)	246 mm (9.7 in) x 330 mm (13.0 in) x 162 mm (6.3 in)	
Weight	i1210	5.2 kg (11.5 lbs)
	i1220	5.5 kg (12.0 lbs)
Recommended daily scanning volume	Up to 1,500 pages per day	

(ppm = pages per minute, ipm = images per minute, dpi = dots per inch)

**Service Offerings: Multi-Year Service Options Available, Featuring AUR (Advanced Unit Replacement) and Next-Business-Day Response**

## Kodak i1300 Series Scanners

Take departmental scanning to a whole new level of productivity



When you want the power-user features of high-volume scanners in models perfectly suited for your departmental needs, see all that the new **Kodak i1310** (simplex) and **i1320** (duplex) Scanners can do.

To start, they deliver high-speed scanning to put some zoom in your throughput and productivity, delivering up to 60 ppm bitonal and grayscale, and 30 ppm color.

Plus, you'll appreciate innovative, new features like Smart Touch functionality: just push one scanner function button to launch one of nine scanning configurations, delivering preset scanner settings along with a variety of output formats and destinations. These include scan to applications, PDF, TIFF or JPEG, disk, e-mail, fax and printer.

You'll love our unique tilt-and-scan feature, delivering two scanning positions:

- Flat with trays extended for higher scanning volumes
- Fully upright with the input tray folded down for transaction feeding

And there's more: optional A3 and A4 size tethered flatbed accessories, long (up to 863 mm/34 in) and small (ID-card size) document feeding, searchable PDF output, full integration with **Kodak Capture Software** and all the high-end features you've come to expect: enhanced Perfect Page image processing, ultrasonic multi-feed detection, 600 dpi optical resolutions, and a very compact footprint.



## i1300 Series technical specifications

Paper feeding	Up to 75 sheets of 75 g/m <sup>2</sup> (20 lb) paper; handles small documents such as identification cards	
Document sizes	Max	215 mm x 863 mm (8.5 in x 34 in)
	Min	50 mm x 63.5 mm (2.0 in x 2.5 in)
Scanning speed	Bitonal/grayscale: up to 60 ppm/120 ipm at 200 dpi	
Portrait, letter size	Color: up to 30 ppm/60 ipm at 200 dpi	
Bundled software	<b>TWAIN</b> and <b>ISIS</b> drivers; <b>Kodak Capture Software, Lite</b> ; <b>Nuance ScanSoft OmniPage</b> and <b>PaperPort</b> (or <b>PaperPort Deluxe 9</b> for Asian countries)	
Optical resolution	600 dpi (i1310/i1320 and optional A3/A4 flatbed accessories) 1200 dpi (A4 flatbed accessory)	
Output resolution	75, 100, 150, 200, 240, 300, 400, 600 and 1200 dpi	
Imaging features (in the scanner)	Perfect Page scanning; iThresholding; adaptive threshold processing; deskew; autocrop; relative cropping; aggressive cropping; electronic color dropout; dual stream scanning; interactive color, brightness and contrast adjustment; auto orientation; automatic color detection; background color smoothing; Smart Touch functionality	
Interface	USB 2.0 (cable included)	
Supported operating systems	<b>Windows Vista</b> SP1 (32- and 64-bit), <b>Windows Server 2003</b> (32- and 64-bit), <b>Windows XP SP2</b> (32- and 64-bit), <b>Windows 2000</b> Professional SP4 (32-bit), <b>Linux SUSE v10.1+</b> (32-bit), <b>Linux Fedora v7+</b> (32-bit), <b>Linux Ubuntu v6.06+</b> (32-bit)	
Recommended PC configuration	For documents up to 356 mm (14 in) long at 400 dpi: <b>Pentium 4</b> , 3.2 GHz processor, 512 MB RAM For documents up to 660 mm (26 in) long at 400 dpi: <b>Pentium 4</b> , 3.2 GHz processor, 1 GB RAM For longer documents/higher resolution: <b>Pentium 4</b> , 3.2 GHz processor, 3GB RAM	
Dimensions (H x W x D)	246 mm (9.7 in) x 330 mm (13.0 in) x 162 mm (6.3 in)	
Weight	i1310	5.2 kg (11.5 lbs)
	i1320	5.5 kg (12.0 lbs)
Recommended daily scanning volume	Up to 3,000 pages per day	

(ppm = pages per minute, ipm = images per minute, dpi = dots per inch)

**Service Offerings: Multi-Year Service Options Available, Featuring AUR (Advanced Unit Replacement) and Next-Business-Day Response**

## Kodak i100 Series Scanners

### Two departmental models with Perfect Page scanning *and* SurePath paper handling: i150 and i160

Both models in the **Kodak i100 Series** deliver superb performance and value for busy departments and small offices everywhere. They provide a host of advanced features and benefits, including advanced image processing for great image quality automatically; simultaneous output of bitonal and color—or bitonal and grayscale—images; and an auto-feeder that lets you scan documents up to A3 size.

The i150 and i160 scanners are the lowest-priced models from Kodak, featuring Perfect Page scanning *and* SurePath paper handling. Now you can take advantage of exceptional imaging and smooth paper transport at an unprecedented price point.

Other benefits include a fast IEEE-1394 (**FireWire**) interface (card and cable included), 3-D ultrasonic multi-feed detection and electronic color dropout to boost office productivity, and VRS compatibility to extend your imaging options.



## i100 Series technical specifications

Paper feeding	ADF 150-sheet capacity
Document sizes (ADF)	Max 297 mm x 432 mm (11.7 in x 17 in)
	Min 64 mm x 89 mm (2.5 in x 3.5 in)
Scanning speed A4, 200 dpi, landscape	Simplex 40 ppm
	Duplex 80 ipm
Scanning speed A4, 200 dpi, landscape, simultaneous output mode	Simplex 40 ppm/80 ipm
	Duplex 40 ppm/160 ipm
Bundled software	<b>Kodak Capture Software, Lite</b>
Optical/output resolution	300 dpi/75-600 dpi
Imaging features (in the scanner)	Perfect Page scanning; iThresholding; autcrop; aggressive cropping; deskew; electronic color dropout; dual stream scanning; halftone removal; noise removal; VRS compatible
Output formats	Bitonal, grayscale, 24-bit color
Interface/drivers	IEEE-1394 ( <b>FireWire</b> ) interface (card and cable included); 6-pin connector/ <b>TWAIN</b> and <b>ISIS</b> (bundled)
Supported operating systems	<b>Windows 98SE,</b> <b>Windows Me,</b> <b>Windows 2000 Professional SP4 (32-bit),</b> <b>Windows XP (32-bit),</b> <b>Windows Vista (32-bit)</b>
Dimensions (H x W x D)	i150 236 mm x 547 mm x 300 mm (9.3 in x 21.5 in x 11.8 in)
	i160 365 mm x 547 mm x 300 mm (14.4 in x 21.5 in x 11.8 in)
Weight	i150 8.9 kg (19.8 lbs)
	i160 10.4 kg (23 lbs)
Recommended daily scanning volume	Up to 3,000 pages

(ppm = pages per minute, ipm = images per minute, dpi = dots per inch)

**Performance Plus Service Offerings: Multi-Year Service Options and Support/Enhancement Services Available**

## Kodak i1400 Series Scanners

### From small cards to long printouts, they scan it all!

Because documents aren't always the ideal shape, size or quality, the **Kodak i1410**, **i1420** and **i1440** Scanners are here. These tabletop units handle everything from small cards to extra-long printouts with speeds up to 75 ppm/150 ipm. Plus, there's enhanced Perfect Page image quality, great ease of use, and impressive productivity.

Scan documents up to 863 mm long (34 inches) on everything from onionskin to card stock. The i1440 scanner's long document mode can handle materials up to 6.1 meters (20 ft) long and beyond. Add an optional A3 or A4 "tethered" flatbed accessory to scan bound materials.

When it comes to image quality, Kodak's got you covered with an array of impressive features:

- Automatic color detection senses, then outputs automatically in color, grayscale or black-and-white
- Background color smoothing removes variations in background color
- Interactive color output adjustment lets you adjust brightness, contrast and color balance to personal preferences
- Improved color accuracy enhances images for truer, more consistent colors
- Auto orientation rotates images correctly for reading
- Special i1440 scanner features include photo extraction as a separate image file; improved, trainable electronic color dropout; and segmented black-and-white output

There's great ease of use with Smart Touch functionality, so you can scan to file, e-mail, publishing or other applications with just one click. A post-scan imprinter on the i1420 and i1440 scanners prints tracking information directly on documents—with no sacrifice in speed. The USB 2.0 interface provides easy connectivity and fast transfer times. You can even switch between black-and-white and color scanning "on the fly" (i1440).



## i1400 Series technical specifications

Paper feeding	Up to 150 sheets of 60 g/m <sup>2</sup> (16 lb) paper; Handles paper weights from 34-413 g/m <sup>2</sup> (9-110 lb)
Document sizes	Max 297 mm x 863 mm (11.7 in x 34 in) i1440 (in long document mode): 254 mm x 6.1 m (10 in x 240 in) Min 64 mm x 89 mm (2.5 in x 3.5 in)
Scanning speed	i1410/i1420: up to 60 ppm/120 ipm i1440: up to 75 ppm/150 ipm (speed may vary depending on driver, application software, OS and PC in use)
Bundled software	<b>TWAIN</b> , <b>ISIS</b> and <b>Windows</b> Imaging Architecture Drivers; <b>Kodak</b> Capture Software, Lite
Optical resolution	600 dpi (i1410/i1420/i1440 and optional A3/A4 flatbed accessories) 1200 dpi (A4 flatbed accessory)
Output resolution	75, 100, 150, 200, 240, 300, 400, 600 and 1200 dpi
Imaging features (in the scanner)	Perfect Page scanning; iThresholding; adaptive threshold processing; deskew; autocrop; relative cropping; aggressive cropping; electronic color dropout; dual stream scanning; interactive color; brightness and contrast adjustment; automatic orientation; automatic color detection; background color smoothing; Smart Touch functionality  i1440 only: segmented black-and-white images; automatic photo cropping; multiple electronic color dropout; trainable electronic color dropout; long document mode; special document mode; toggle patch
Imprinting	Post-scan document imprinter (i1420/i1440)
Interface	USB 2.0 (cable included)
Supported operating systems	<b>Windows Vista</b> SP1 (32-bit), <b>Windows XP</b> SP2 (32-bit), <b>Windows 2000</b> Professional SP4 (32-bit)
Recommended PC configurations	For documents up to 356 mm (14 in) long at 400 dpi: <b>Pentium 4</b> , 3.2 GHz processor, 512 MB RAM For documents up to 660 mm (26 in) long at 400 dpi: <b>Pentium 4</b> , 3.2 GHz processor, 1 GB RAM For longer documents/higher resolutions: <b>Pentium 4</b> , 3.2 GHz processor, 3 GB RAM
Dimensions (H x W x D)	i1410: 236 mm (9.7 in) x 547 mm (21.5 in) x 300 mm (11.8 in) i1420/i1440: 365 mm (14.4 in) x 547 mm (21.5 in) x 300 mm (11.8 in)
Weight	i1410 8.9 kg (19.8 lbs); i1420/i1440 10.4 kg (23 lbs)
Recommended daily scanning volume	i1410/i1420 Up to 7,500 pages per day i1440 Up to 10,000 pages per day

(ppm = pages per minute, ipm = images per minute, dpi = dots per inch)

Service Offerings: Multi-Year Service Options and Support/Enhancement Services Available

## Kodak i600 Series Scanners

### Productivity, versatility and reliability redefined: i610, i620, i640 and i660

The i600 series delivers great performance to your desktop with innovations like SurePath paper handling, Perfect Page scanning, three independent ultrasonic multi-feed detection sensors, automatic color detection and more. All at a price that puts incredible productivity and value in reach to give you a competitive edge.

Kodak's renowned paper handling can scan documents of different sizes, weights and types. Continued enhancements and feedback demonstrate that customers are experiencing daily volumes of 120,000 pages per day. Continued testing of i600 feeder and separation rollers have resulted in longer life expectancy, providing customers with a lower cost of ownership.

Reduce the need for rescans with advanced image processing for great scans the first time. Get virtually every feature you'll need, including automatic color detection (scan in color automatically when color is sensed above a set threshold), electronic color dropout, pre-scan document imprinting and more. And benefit from the proven reliability of **Kodak i600 Series Scanners**, combining robust paper feeding with exceptional image quality to fly through work in a breeze.

Additional features and benefits—

- Supported by **Kodak Capture Pro Software**
- 500 sheet, elevator with automatic document feeder
- Bundled **ISIS** and **TWAIN** drivers
- Manual feeder accessory, customized to fit all i600 series scanners, allows single-sheet feeding of special documents
- VRS-ready

The i610 scanner delivers the full feature set of its i600 series siblings in a bitonal and grayscale image output model for applications that typically do not require color output.



## i600 Series technical specifications

Paper feeding	ADF 500-sheet capacity, elevator design	
Document sizes	Max	305 mm x 863 mm (A3) (12 in x 34 in)
	Min	64 mm x 64 mm (A8) (2.5 in x 2.5 in)
Scanning speed A4, 200 dpi, landscape	Simplex	80-120 ppm, depending on model
	Duplex	160-480 ipm, depending on model
Options	White imaging background; ultra-lightweight feed module, manual feeder	
Imaging features (in the scanner)	Perfect Page scanning; SurePath paper handling; autocrop; aggressive crop; deskew; electronic color* dropout; brightness and contrast control; ultrasonic multi-feed detection with three sensors; VRS-ready; pre-scan imprinting; orthogonal rotation; toggle patch; automatic color* detection	
Optical/output resolution	300 dpi/100-300 dpi color/grayscale; 200-400 dpi bitonal	
Output formats	Bitonal, grayscale, 24-bit color	
Interface/drivers	IEEE-1394 ( <b>FireWire</b> ) interface, 6-pin connector; IEEE-1394 (card and cable included); <b>TWAIN</b> and <b>ISIS</b> (included); <b>Kodak Capture Pro Software</b>	
Supported operating systems	<b>Windows Vista</b> (32-bit), <b>Windows XP SP2</b> (32-bit), <b>Windows 2000 SP4</b>	
Dimensions (H x W x D)	400 mm x 610 mm x 770 mm (15.7 in x 23.9 in x 30.3 in)	
Weight	38.6 kg (85 lbs)	
Recommended daily scanning volume	i1610, i1620	Up to 80,000
	i1640	Up to 100,000
	i1660	Up to 120,000

(ppm = pages per minute, ipm = images per minute, dpi = dots per inch)

\* the i610 model does not scan in color

**Service Offerings: Multi-Year Service Options and Support/Enhancement Services Available**

## Kodak i780 Scanner

### Real-world speed for mission-critical workloads

It's a newly designed mid-volume scanner that delivers auto orientation at rated speed and 300 dpi scanning at the same throughput speed as 200 dpi! That means the **Kodak i780 Scanner** outruns the competition with productivity up to 130 ppm:

- Optimizing data extraction
- In color, grayscale or black-and-white
- In dual stream mode (outputting up to four images per scan)
- With all image processing enabled

That's true, real-world productivity.

Now you can slash presorting and post-processing, thanks to automatic orientation based on document content. You benefit from Perfect Page imaging for exceptional image quality with readability equal or better than the original document. Plus, auto color detection for threshold-based automatic color scanning, electronic color dropout, auto cropping and five output options to meet virtually every imaging requirement:

- Black-and-white
- Color
- Grayscale

Plus, two dual stream options:

- Color and black-and-white
- Grayscale and black-and-white

There's also extra versatile, highly efficient paper handling through SurePath technology so you can easily scan mixed batches of business documents, photos, tear sheets, graphics and more. Ultrasonic multi-feed detection helps prevent misfeeds by recognizing labels, stick-on notes, and double feeds. A flexible input tray lets you mix document sizes and shapes. There's even a short-document tray for feeding stacks of checks.

No other scanner in this class delivers the combination of speed, productivity-building features, and omnivorous paper handling as the **Kodak i780 Scanner**.

## i780 Scanner Technical Specifications

Paper feeding/elevator	500-sheet elevator-design auto document feeder with four settings: continuous feed, 100-sheet, 250-sheet, and 500-sheet batches, short document tray
Document sizes	Max ADF: 305 mm x 863 mm (12 in x 34 in) With short document tray: 164 mm x 164 mm (6.4 in x 6.4 in) Min 64 mm x 64 mm (2.5 in x 2.5 in)
Scanning speed	130 ppm (up to 520 ipm for dual-stream output)
Optical resolution	300 dpi
Output resolution	Color/grayscale: 100/150/200/240/300 dpi; Bitonal: 200/240/300/400 dpi
Multi-feed detection	Three ultrasonic sensors, working together or independently
Imaging features (in the scanner)	Perfect Page scanning; iThresholding; automatic color detection; autocrop; aggressive crop; deskew; electronic color dropout; dual stream scanning; orthogonal rotation; automatic orientation; halftone removal; noise removal; toggle patch
Interface/drivers	IEEE-1394 ( <b>FireWire</b> ) interface; 6-pin connector; IEEE-1394 (card and cable included); <b>TWAIN</b> and <b>ISIS</b> (included); <b>Kodak Capture Pro Software</b>
Recommended PC configuration	<b>Pentium 4</b> 2.4 GHz processor with 512 MB RAM
Supported operating systems	<b>Windows 2000 SP4</b> , <b>Windows XP SP2</b> (32-bit), <b>Windows Vista</b> (32-bit)
Dimensions (H x W x D)	40 cm (15.7 in) x 6.1 cm (23.9 in) x 77 cm (30.3 in)
Weight	38.6 kg (85 lbs)
Recommended daily volume	Up to 130,000 pages per day

(ppm = pages per minute, ipm = images per minute, dpi = dots per inch)

**Service Offerings: Multi-Year Service Options and Support/Enhancement Services Available**



## Kodak i1800 Series Scanners

### Kodak's most productive and durable scanners for high-volume workloads

Is your workload huge and seemingly never ending? Do you need to keep scanning dependably on one, two, or even three shifts? Now there are two ideal solutions: the **Kodak i1840** and **i1860** Scanners. All the features are here to tackle the most demanding high-volume challenges: Perfect Page image quality, SurePath paper handling, rock-solid construction, a keen eye on ergonomics and a modest footprint all add up to an outstanding combination of performance and value. Plus, there's an easy upgrade path from the i1840 Scanner to the i1860 Scanner.

Both models are designed with user ergonomics in mind, featuring touch-screen ease of use, quiet operation and an automatic height adjustment to improve operator satisfaction and overall productivity.

And that's just the beginning of the benefits for comfort and productivity—

- Up to 200 ppm throughput
- Five output formats—black-and-white, grayscale or color, plus two dual stream options: black-and-white and grayscale or black-and-white and color—for imaging flexibility that meets many downstream needs
- Environmentally friendly—lead-free; **Energy Star** qualified, mercury-free Xenon lamps
- Adjustable, color, touch screen for easy operation
- Automatic color detection “tells” the scanner when to capture images in color, which reduces document preparation and helps automate scanning
- Automatic orientation—based on a document's content, automatically delivers the scanned image in its proper reading orientation
- Front- or rear-side imprinting
- Lockable paper-feeding guides for better control of print location
- Patch reading and image addressing for precise batch control, document tracking and image management



### i1800 Series technical specifications

Paper feeding	500-sheet feeder; standard feeder: 45 g/m <sup>2</sup> (12 lb) bond to 200 g/m <sup>2</sup> (110 lb) index; ultra-lightweight feeder: 25 g/m <sup>2</sup> (7 lb) rice paper to 75 g/m <sup>2</sup> (20 lb) bond
Document sizes	Max 305 mm x 863 mm (12 in x 34 in) Min 64 mm x 64 mm (2.5 in x 2.5 in)
Scanning speed	i1840: up to 160 ppm/640 ipm; i1860: up to 200 ppm/800 ipm
Optical resolution	300 dpi
Output resolution	Bitonal: 200/240/300/400 dpi Color/grayscale: 100/150/200/240/300 dpi
Imaging features (in scanner)	Perfect Page scanning, iThresholding; autocrop, aggressive crop, deskew; image rotation; electronic color dropout; dual stream scanning; halftone removal; noise removal; zone processing; toggle patch; automatic color detection; automatic orientation
Interface/drivers	IEEE-1394 ( <b>FireWire</b> ) interface, 6-pin connector; IEEE-1394 (card and cable included); <b>TWAIN</b> and <b>ISIS</b> (included); <b>Kodak Capture Pro Software</b>
Supported operating systems	<b>Windows 2000 SP4</b> , <b>Windows XP SP2</b> (32-bit), <b>Windows Vista SP1</b> (32-bit)
Recommended PC configuration	<b>Pentium 4</b> 2.4 GHz processor with 512 MB RAM
Dimensions (H x W x D)	1020-1070 mm (40-50 in) x 780-830 mm (31-33 in) x 990 mm (39 in); adjustable height; width varies depending on touch screen position
Weight	218 kg (480 lbs)
Recommended daily scanning volume	Unlimited

(ppm = pages per minute, ipm = images per minute, dpi = dots per inch)

**Specifications are subject to change without notice**

## Kodak Capture Pro Software

### Capture your data and free it to do more

Share knowledge. Boost customer satisfaction. Gain productivity. Ensure regulatory compliance. You have documents with valuable data that you need to capture and turn into information that works harder. Now you can free your data and take command of it with advanced-yet-easy **Kodak** Capture Pro Software.

The advantages start with optimization of all the features of your **Kodak** Scanner, unlike other capture software that only delivers a common set of basic functionality across all scanners. There's a powerful, intuitive interface featuring floating toolbars and windows for fast, easy access to all job functions. Now operator training goes faster, and users can easily switch from one scanner to another, thanks to the common interface.

Scan to e-mail, file, print, PDF and applications through walk-up functionality. And these features are just the beginning! There's also—

#### Advanced indexing and data capture

- Drop-down lists
- MICR OCR
- Drag-and-drop OCR
- Unlimited searchable PDF

#### Real-time batch monitoring

- Consolidate remote capture into a single workflow
- View batch structure as it builds
- Validate index data captured from bar codes and OCR on-the-fly during scanning
- Make corrections while scanning and enhance quality control



#### Low cost of ownership

- Scale up from ad hoc to batch scanning seamlessly
- No volume-based click charges
- Save on IT and application costs

#### Customized workflow and productivity

- Connect to a broad range of applications, including third-party document management systems
- Customize main screen to specific capture environments or jobs
- Invoke batch operations, indexing and other key tasks almost anywhere in your capture workflow

**Kodak** Capture Pro Software is productive right out of the box, thanks to a choice of standard job settings. And innovative additional features make it even more powerful: full dual-stream scanning support, PDF/A without volume limitations, two-dimensional barcode support, viewer filtering, strong security and more.



To download a free demonstration version of **Kodak** Capture Pro Software, visit: [www.kodak.com/go/captureproductivity](http://www.kodak.com/go/captureproductivity).

## SYSTEMS AND SOLUTIONS

### Kodak i6000 Series Check Scanners

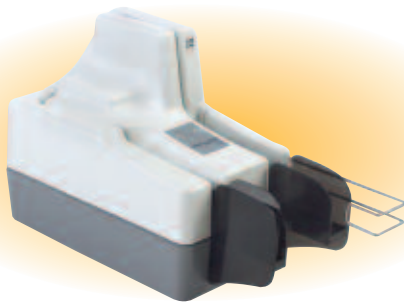
#### Even more digital check processing advantages for the 21st century

Accelerate your cash flow and gain a competitive edge with this comprehensive check scanning solution, including versatile hardware choices, plus client and server software. When you're enabling money exchange based on digital imaging, exceptional image quality is a must, and that's exactly what you'll get—outstanding scanned check images to enable consistently smooth processing by the client application.

Three models deliver exactly the features you need: the **Kodak i6015** Check Scanner for single document feeding and the **i6060** and **i6090** Check Scanners for automatic document feeding.

- High-quality scans of checks and other documents
- Magnetic reading of MICR data for outstanding accuracy
- Image formats meet ANSI X9B standards
- Automatic scanning of up to 100 checks per minute (i6060 and i6090)
- Easily integrated into your PC configuration with USB 2.0 interface
- Compact size fits almost anywhere
- Optional inkjet printer allows pre-scan imprinting of document control numbers (DCN) or other data on check backs

Now you don't have to wait: scan and move money the same day, and achieve greater security and accuracy while reducing time and costs.



### i6000 Series technical specifications

Auto feeder capacity	Auto feeder—volumes depend on thickness and condition of documents—up to 50 documents (i6060 and i6090)
Document sizes	Up to UNI A6 Document height 56-106 mm (2.2-4.2 in) Document length 80-228 mm (3.2-9.0 in) Document weight 60-120 g/m <sup>2</sup> (16-32 lbs)
Scan system throughput (6 inch documents)	i6015: Single document feeding i6060: Up to 65 documents per minute (8-bit grayscale/bitonal); up to 62 documents per minute (24-bit color) i6090: Up to 100 documents per minute (8-bit grayscale/bitonal); up to 85 documents per minute (24-bit color)
Image resolution	200 x 200 dpi 100 x 100 or 200 x 100 software selectable from the API
Image formats	Bitmap (BMP) 4-side cropping and image rotation performed by the API
Supported operating systems	<b>Windows 2000, Windows XP</b>
Minimum PC configuration	1 GHz <b>Pentium 3</b> processor, 128 MB RAM, 100 MB free disk space, USB 1.1 port
Recommended PC configuration	2.4 GHz <b>Pentium 4</b> processor or greater; 512 MB RAM, 200 MB free disk space, USB 2.0 port
Scanning method	Concurrent, duplex (front and rear)
Scanner image format	Uncompressed grayscale, bitonal and color
MICR recognition	Recognition algorithm for E13B, CMC7, or CMCO standards performed by the API
Recommended daily volume	Up to 5,000 checks per day

(dpm = documents per minute, ipm = images per minute, dpi = dots per inch)

**Service Offerings: Multi-Year Service Options and Support/Enhancement Services Available**

## **Kodak t6000 Client Software for transaction applications**

The ideal way to easily integrate your **Kodak i6000 Series Check Scanner** with your existing PC based infrastructure.

- Supports the complete portfolio of **Kodak** Scanners
- Automates data entry via recognition technologies and auto-population of fields in the client application
- Reads MICR, courtesy and legal amounts
- Ensures that images are accurate and complete
- Securely interfaces with **Kodak t6000 Server Software**

## **Kodak t6000 Server Software for corporate or financial transaction centers**

It's a powerful application that can support thousands of distributed capture clients across multiple geographies and business types.

- Captures images from thousands of clients
- Leverages standard Internet security protocols
- Checks for complete, accurate images and data capture
- Sorts and routes by varied criteria
- Integrates easily with other applications, including ERP and fraud management



## Kodak s1220 Photo Scanning System

**Compact, fast, powerful way for retailers to digitize volumes of photos, postcards and documents—ideal for photofinishers**

It's a versatile countertop system that lets you digitize hundreds of photos and other memorabilia in minutes. Virtually eliminate labor-intensive manual feeding—just place a stack of input in the feeder and start scanning! There's also user-friendly software that delivers the versatility and control you need to easily retouch and enhance customer photos.

The **Kodak s1220 Photo Scanning System** is a simple, cost-effective addition to your current photo services allowing you to offer a valuable and increasingly in-demand service. And do it all with a low initial investment and minimal staff training.

- Scan photos exactly the way you receive them—mixed sizes, different paper weights, random orientation—simply place them in the fast auto-feeder
- Easily handle up to 30 photos (100 mm x 150 mm; 4 in x 6 in) per minute at 300 dpi
- Continuously feed photos while a batch is scanning
- Improve problem-photos easily—reduce red-eye, correct color balance and contrast
- Rotate photos clockwise or counterclockwise
- Scan both sides in one pass to capture information written on the back
- Create JPEG files at 300 or 600 dpi
- Accept image sizes from 50 mm x 63.5 mm (2 in x 2.5 in) all the way up to 215 mm x 863 mm (8.5 in x 34 in)
- Handle oversized, mounted, bound or fragile photos with optional A3/A4-size flatbed

Now your customers can bring their old, treasured photos and other memorabilia out of their shoeboxes, photo albums and storage, and enjoy and share them in new digital ways, thanks to your **Kodak s1220 Photo Scanning System**.



## s1220 Photo Scanning System technical specifications

Throughput speeds	30 photos per minute at 100 mm x 150 mm (4 in x 6 in) at 300 dpi (speed may vary depending on operating and PC systems)
Output resolution	300 and 600 dpi
Maximum photo size	215 mm x 863 mm (8.5 in x 34 in)
Minimum photo size	50 mm x 63.5 mm (2 in x 2.5 in)
Optical resolution	600 dpi (1200 dpi with A4 flatbed accessory)
Feeder	Up to 30 mixed-size photos per batch; continuous photo feeding supported; also handles documents, ID cards, embossed cards and insurance cards
Connectivity	USB 2.0 (cable included)
Document imaging features	Perfect Page scanning; iThresholding; adaptive threshold processing; deskew; autocrop; relative cropping; aggressive cropping; electronic color dropout; dual stream scanning; interactive color; brightness and contrast adjustment; auto orientation; automatic color detection; background color smoothing
Bundled software	<b>Kodak Photo Scanning Software</b> ; <b>Kodak Capture Software, Lite</b> (for scanning documents); <b>TWAIN</b> driver
Photo image enhancement	Red-eye removal; photo retouching (brightness adjustment and color correction); automatic deskew; image rotation
Environmental factors	<b>Energy Star</b> -qualified
Recommended PC configuration	Two available USB 2.0 ports on the host PC; for documents up to 356 mm (14 in) long at 300 dpi: <b>Pentium 4</b> , 3.2 GHz processor, 1 GB RAM; for longer documents or higher resolutions: <b>Pentium 4</b> , 3.2 GHz processor, 3 GB RAM
Supported operating systems	<b>Windows Vista</b> SP1 (32-bit), <b>Windows Server 2003</b> (32-bit), <b>Windows XP</b> SP2 (32-bit), <b>Windows 2000</b> Professional SP4 (32-bit)
Dimensions (H x W x D)	246 mm (9.7 in) x 330 mm (13.0 in) x 162 mm (6.3 in)—not including input and output trays
Weight	5.5 kg (12.0 lbs)

(dpm = documents per minute, ipm = images per minute, dpi = dots per inch)

**Service Offerings: Multi-Year Service Options and Support/Enhancement Services Available**

## Kodak s1740 Capture System

### Much more than a scanner—a complete solution to eliminate pre- and post-sorting of documents

The innovative **Kodak s1740** Capture System includes a fully integrated, high-speed document scanner with inline document separation capability along with the controlling software to make it all coordinate productively. It's a wonderful solution for a variety of applications, including centralized batch scanning for customer service, magazine subscriptions, payment and invoice processing, mailroom operations and many others.

Compact, powerful and flexible, the **Kodak s1740** Capture System scans, sorts and imprints intermingled documents of various sizes and weights with a wide range of output options, at speeds up to 110 pages per minute/220 images per minute (portrait).

- Saves time and money by eliminating most manual pre- and post-sorting
- Handles intermixed document weights, orientations and sizes from credit card slips to legal-size paper
- Optical and ultrasonic multi-feed detection at the intake point prevents double feeds; sensors along the paper path monitor transport and also aid in multi-feed detection
- Automatically deskews, crops and rotates images
- Leverages OCR, barcodes and/or MICR data for automatic post-sorting into 2, 6, 8 or 12 pockets (depending on configuration); plus optional printing of MICR fonts, barcodes and endorsements
- Can also sort based on document attributes (size, shape and more) and other graphic elements
- Easily specify up to six different images (color, grayscale and bitonal, both front and back) from one scanning pass
- Generates wide range of statistical information on processed documents for better decision making

Complete with powerful software to handle any job. Benefit from flexible input for all types of applications and versatile tools for user administration, document type definition, run generation and statistical reports. Plus, there's real-time text interpretation to reduce manual sorting of potentially unknown, unsorted and unencoded documents by allowing sorting, labeling, and assigning of archival image output types while documents are still in the scanner.

Maximum productivity, total performance, impressive savings. Get it all with the **Kodak s1740** Capture System.



## s1740 Capture System technical specifications

Paper feeding	Continuous feeder with approximately 1400-sheet capacity
Document sizes	Max 216 mm x 356 mm (8.5 in x 14 in) Min 70 mm x 125 mm (2.75 in x 4.9 in)
Scanning speed 200 dpi, letter-size/ A4 documents	Up to 110 ppm/220 ipm portrait (throughput speeds may vary depending on driver, application software, operating system and PC)
Optical resolution	300 dpi for color; 240 dpi for grayscale images
Output resolution	Black and white: 200/240/300 dpi Color/grayscale: 100/120/150/200/240/300 dpi
On-board imaging features	Autocrop, aggressive crop; deskew; image rotation; electronic color dropout; dual stream scanning; halftone removal; noise removal; zone processing
Inline document separation	Available via 2-, 6-, 8- and 12-pocket configurations
Imprinting/endorsing/ encoding	Optional front post-scan and rear post-scan (front side imprinting in E13B fonts only, rear side endorsing only)
Character reading (some optional)	Optical: Single-line OCR-A, OCR-B or E13B; two read windows definable by software; read direction horizontal and vertical, selectable Supported barcodes: Code 3 of 9 (Code 39); Code 2 of 5 interleaved, non-interleaved, with IATA, industrial, MATRIX, DATALOGIC; Code 128, EAN 8, EAN 8 with AddOn; EAN13, EAN13 with AddOn
Paper thicknesses and weights	Check-sized documents: 70 g/m <sup>2</sup> (14.3 lbs/sq ft) to 110 g/m <sup>2</sup> (22.5 lbs/sq ft) Full-page documents: 60 g/m <sup>2</sup> (12.3 lbs/sq ft) to 130 g/m <sup>2</sup> (26.6 lbs/sq ft)
Minimum PC configuration	<b>Pentium 4</b> , 3.0 GHz processor with 512 MB RAM
Supported operating systems	<b>Windows 2000, Windows XP SP2</b>
Connectivity	SCSI-2 interface (card and cable included)
Dimensions (H x W x D)	With 2 or 6 pockets: 1320 mm (52.0 in) x 1675 mm (65.9 in) x 635 mm (25.0 in) With 8 or 12 pockets: 1803 mm (71.0 in) x 1675 mm (65.9 in) x 635 mm (25.0 in)
Weight	With 2, 6 or 8 pockets: 232 kg (511.3 lbs) With 12 pockets: 250 kg (535.5 lbs)
Recommended daily volume	Unlimited

(ppm = pages per minute, ipm = images per minute, dpi = dots per inch)

**Service Offerings: Multi-Year Service Options and Support/Enhancement Services Available**

# REFERENCE ARCHIVING

## Kodak Products to Enable Your Reference Archive

### For accountability, safety and access

Today, more than ever, corporate accountability is critical. It's crucial to cost-effectively keep your digital and paper documents and files available in a way that survives technological advances and obsolescence. Imagine an important file that isn't where it's supposed to be. Whether from network mishaps, legal delays, or even fraud, why disrupt and jeopardize your business operations when you can have an archival solution that's truly secure? Kodak has answers that keep your critical files safe, complete and easily accessible, in digital and analog form.



Kodak can help you meet the ever-increasing regulatory requirements for safekeeping and managing your critical business information. Our products—including digital-to-film writers and film-to-digital scanners—help people like you create reference archives that demonstrate responsible records management and reduce the costs of storing documents online.

## Kodak i9600 Series Writers

### The easy way to help protect your critical business information from tampering or loss

The i9600 series writers are the ideal way to archive records. They accept TIFF files, organized by your selected records management attributes—such as class, date, or destruction schedule—and create copies of them on **Kodak Reference Archive Media**. Self-describing indices provide built-in audit trails and help make your reference archive repository accessible digitally through host applications. Reference archive media can be automatically searched and redigitized for online access and retrieval to provide short-term validation and long-term storage of records—without burdening your servers. Choice of two models based on throughput needs.

- Accepts bitonal TIFF input
- Unattended filming
- High-contrast images
- Variable reduction through image scaling
- Compatible with ISO/ANSI film standards
- Creates two masters at the same time
- Capable of writing images full width of film; large images can be preserved on 16 mm film

## i9600 Series technical specifications

Compression Factor	i9610 Throughput*	i9620 Throughput*	Packing Density
24:1	85 ipm	170 ipm	7,225 images/roll
40:1	200 ipm	400 ipm	17,000 images/roll

\* Average images per minute (ipm); actual performance is dependent upon application

Dimensions (H x W x D) 1196 mm x 615 mm x 810 mm  
(47.1 in x 24.2 in x 31.9 in)

Weight 159 kg (350 lbs)

(ppm = pages per minute, ipm = images per minute, dpi = dots per inch)

**Service Offerings: Multi-Year Service Options and Support/Enhancement Services Available**



## Kodak Reference Archive Media

### Life expectancy of up to 500 years for peace of mind

Specially formulated for use with the i9600 series writers and the previous-generation **Kodak Digital Science** Document Archive Writer, this media provides high quality, human-readable reference archives of digital images. Reference archive media is manufactured to ANSI and ISO specifications, and when properly processed and stored, has a life expectancy of 500 years.

- High resolution, high-quality images
- Coated on polyester (PET) base, meeting ISO requirements for safety film
- Reduces dirt and static problems in retrieval, scanning, and duplication
- Manufactured under stringent conditions to ensure highest-quality microfilm
- 100 ft (33.5 m) or 215 ft (66 m) lengths available



## Kodak i9600 Application Software Kit

The i9600 application software kit consists of the i9600 application software, as well as the electronic microimager software and the software value pack.

### Kodak i9600 Application Software

The **Kodak** i9600 Application Software is a **Microsoft Windows** application that provides an easy-to-use interface to the **Kodak** i9600 Series Writers and the **Kodak Digital Science** Document Archive Writer 4800. This software replaces the **Kodak** Archive Writer Interface Software (AWIS) with a more robust, easier to use, interface design that makes writing a reference archive easy!

The software consists of two programs, input processor and the **Kodak** i9600 Application Software, and an API.

- The input processor inspects TIFF and text images, and if necessary, formats them to i9600 writer specifications before writing them to **Kodak** Reference Archive Media. For example, batch image rotation routines.

- The application software contains both administration and job execution functions that allow you to access and utilize the full range of the hardware capabilities. The administration function focuses on defining parameters such as output format, volume name and retrieval indexes. These parameters are established for each application you define. Once defined, an application is executed using the job execution functions. Here, the software collects and controls the flow of image data to the writer, provides status information and generates a transfer file that contains film-based index values to support retrieval. This transfer file is typically merged into an imaging system database or into a separate database with other index values, as specified.
- Programmatic interfaces exist to support the creation of your own custom user interface, or to create your own customized combined index via the transfer file. There are multiple third-party integrations available from vendors that are part of **Kodak's** Independent Software Vendor program. The functionality you require may already exist.

### Kodak Electronic Microimager Software

Seamlessly integrated with **Kodak** Capture Software, this multi-batch output format application makes it easy to scan documents, create Perfect Page images and write the images to the i9600 series writers or **Kodak Digital Science** Document Archive Writer 4800, while simultaneously uploading your online document management system.

### Software value pack

This CD is full of third-party sample applications that will enhance your reference archive. These tools are available for your use. Contact the vendors for the latest information about their products.

## Electronic Microimaging From Kodak

### Bring digital advantages to your microfilm

With an electronic microimager you can get the most out of your microfilm by adding digital advantages. Capture images with a fast, reliable scanner while digital technology processes the images in the background for the best possible image quality. This integrated system includes a document scanner, a **Kodak** Innovation Series Writer, Capture Software, and Interface Software. Plus, your images are committed to ISO-standard, 16 mm **Kodak** Reference Archive Media.

- Consolidates document capture and backup into a single process
- Get instant access to digital images via your network or write them to digital media
- Automatically performs rotation, skew correction, border removal and cropping
- Inspect images and correct errors by inserting a rescan prior to writing images to film
- Get virtually perfect microfilm—first time, every time

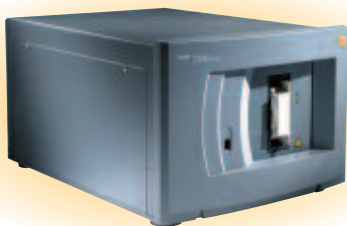
## Kodak i7300 Scanner

### Bring your reference archive to the desktop

Today, microfilm continues to be a low cost, low-risk method of managing documents and information, and is the media of choice for secure, "reference-archive" storage. With the **Kodak i7300 Scanner** you can bridge microfilm's proven stability with the efficiency of digital technology.

The **Kodak i7300 Scanner** virtually eliminates the inefficient aspects of traditional microfilm retrieval—including slow, tedious viewing or limited output and delivery options. It can reduce ongoing costs associated with older printers and readers—from maintenance to high-priced consumables. With the i7300 scanner, your images are retrieved fast; displayed digitally for identification; then printed, faxed, and/or sent as e-mail. You'll have exceptionally high-quality images that are deskewed, cropped, merged (duplexed), and displayed in seconds.

- High speed, desktop, 16 mm film scanner
- Accepts both ANSI and M-type cartridges
- Images can be saved as bitonal or grayscale
- Output in TIFF, multi-page TIFF, and JPEG



### i7300 technical specifications

Scanning resolution	100 to 500 dpi
Electrical requirements	100-120 or 220-240 VAC, 50-60 Hz, 1200W, 6 amps max
Heat dissipation	<750 Btu/hr
PC minimum requirements*	Processor: <b>Pentium 3, Pentium 4</b> , 2.0 GHz, full height PCI bus master slot for use with included 3/4 length scanner card Operating System: <b>Windows 2000</b> Professional, <b>Windows XP</b> Professional Monitor: 19 in, 21 in recommended; 8 MB graphics card Connectivity: ethernet or token ring card as required; serial port for scanner
Dimensions (H x W x D)	285 mm x 381 mm x 559 mm (13 in x 15 in x 22 in)
Weight	29.5 kg (65 lbs)

**Service Offerings: Multi-Year Service Options and Support/Enhancement Services Available**

\* Multi-core PCs require an upgrade accessory

## Kodak i7300 Scanner Application Software

### For complete integration and connectivity

The interface goes beyond other 16 mm film scanning products, delivering speed and efficiency with features made for today's technology. It offers complete connectivity with Computer-Assisted Retrieval (CAR) systems, which integrate seamlessly with i7300 scanner application software. CAR is an accessory to the i7300 scanner application software. You'll also appreciate integration with local- and wide-area networks, and consistently fast and accurate digital image retrieval.

- High quality, positive-appearing images (bitonal to grayscale)
- Real-time image control without rescanning images
- Digital scrolling enables manual desktop searching

## Kodak Image Server Software

### Expand your output options to the network and beyond

Accelerate your productivity even more by creating your own retrieval network. Image server software works with **Kodak Imagemink** Digital Workstations, intelligent microimage scanners and i7300 scanners. With it, they feed into one central server for a full range of routing options and output.

- Serves as many as four printers (scalable to eight)
- Accepts CAR commands
- Enables faxing and e-mail
- Batch prints from document file folders

## Kodak 2400DSV-E and 3000DSV-E Digital Scanner-Printers

### Higher quality microfilm images, even greater film versatility

The digital solution for on-demand printing and scanning, and ideal for safeguarding your critical data with a reference archive. For managing documents and information—and for low cost, low-risk reference archive storage—microfilm is the media of choice. With a **Kodak 2400DSV-E** or **3000DSV-E** Digital Scanner-Printer, you can deliver documents in digital and paper formats—and do it fast. Now with new enhanced features, at no extra cost:

- **EnergyStar** Power Saver—with sleep mode for smart conservation
- Even higher-quality scanning of images—new, enhanced 600 dpi CIS array
- Date and time printing on the page—with optional high-speed video laser printer
- Image distortion correction—remedies slight image distortion issues
- Fully utilize 35 mm full-frame scanning—with optional engineering zoom lens
- Holds an additional 250 sheets of paper—with optional second universal paper cassette

These units make excellent upgrades from analog reader-printers or first-generation film scanners. And they bridge to microfilm's proven performance with the flexibility of digital technology. Get the best of both worlds and output scanned images directly to the unit's optional video laser printer or through the PC interface, via optional **PowerFilm** or optional USB-2 interface with **TWAIN** driver. Post scans on Web sites at up to 800 dpi, or e-mail and fax images seamlessly, via our exclusive **PowerFilm** Application Software.



### 2400DSV-E/3000DSV-E technical specifications

Screen size	2400DSV-E: 303 mm x 303 mm (12 in x 12 in)
	3000DSV-E: 303 mm x 440 mm (12 in x 17 in)
Film formats	Microfiche, jackets, aperture cards, 16 mm and 35 mm roll film, 16 mm M and ANSI cartridges
Lens magnifications	2400DSV-E 7.5x fixed, 9-16x, 13-27x, 23-50x zoom lenses
	3000DSV-E 20-50x, 7-7.5x zoom lenses
Focus control	2400DSV-E manual
	3000DSV-E manual (optional auto focus kit where available)
Image rotation	Automatic for printing; motorized for viewing
Scanning speeds	4.5 seconds @ 200 dpi
Scanning resolutions	200, 300, 400, 600, 800 dpi (restricted image size)
Recommended daily volume	2400DSV-E 300 scans per day
	3000DSV-E 1,000+ scans per day
Electronic zoom	50-200%
Multiple prints	2400DSV-E 1-19 prints
	3000DSV-E 1-99 prints
Interfaces	Video (direct printing); PC (SCSI II), optional USB-2
Exposure control	Automatic and manual
Scanning features	Auto centering; auto frame masking; auto image rotation; auto skew correction; footswitch (optional); grayscale scanning (with optional <b>PowerFilm</b> only); manual masking and cropping (optional)
Illumination	20V, 150W halogen
Power requirements	120V, 50/60 Hz; 230V, 50/60 Hz; 100V, 50/60 Hz
Power consumption	350W
Dimensions (H x W x D)	2400DSV-E 716 mm x 503 mm x 821 mm (28 in x 19 in x 32 in)
	3000DSV-E 853 mm x 560 mm x 760 mm (33 in x 22 in x 30 in)
Weight	2400DSV-E 39 kg (86 lbs)
	3000DSV-E 65 kg (143 lbs)

**Service Offerings: Multi-Year Service Options and Support/Enhancement Services Available**

## PowerFilm Application Software for the i7300 and DSVs

### Unleash the power of film with your PC

**PowerFilm** Application Software combines a user-friendly interface with a wide range of output, indexing, retrieval and distribution tools. It's specially designed for batch scanning and digitization of all film formats. Here are just some of the ways it can make you more productive.

#### Features

- Output options provide versatile image distribution—including TIFF, multipage TIFF, CD Publish and PDF and **Kofax** Ascent upload modules
- Save options allow efficient job management—operators can interrupt, suspend, and return to jobs later; accept or reject options are also available for scanned batches
- Create CDs—build a database of scanned images and data with CD Publish; then use CD Retrieve to search and recall individual images, or groups of images, from indexing criteria that you choose
- Index utility—flexible indexing offers as many as 10 fields—text, numeric or date—with up to 32 characters per field; auto-repeat indexing, such as “current date,” is another efficiency feature that's included
- Limit user interface for easy walk-up customer use



## Kodak Service & Support

### It only takes one call to get the support you need

**Kodak** Service & Support is a leading multi-vendor integrated services provider, delivering consulting, installation, maintenance and support services for the commercial and transactional printing, graphic communications, document imaging and data storage industries. Globally, across 120 countries and with more than 3,000 highly trained service professionals, we stand ready to support your operation—around the clock if necessary.

**Kodak** Service & Support is your one source service provider for Kodak branded equipment, as well as over 1,000 other models from more than 100 manufacturers including scanners, data storage systems, micrographic equipment and more.

### The industry benchmark for service

Today's competitive business environment demands maximum productivity and efficiency. Equipment downtime can keep you from achieving business objectives and have a direct impact on your bottom line. With **Kodak** Service & Support, you have the protection of a global team, dedicated to the quality service you need to keep your operation running at peak performance.

Over four decades of experience in delivering worldwide services has shown us the right combination of options, offerings, parts and systems is essential. **Kodak** Service & Support provides peace of mind with people, processes and technologies that deliver results. Our commitment to service excellence is why **Kodak** Service & Support consistently receives customer satisfaction ratings that exceed 90 percent.

### Kodak Service & Support advantages

#### The right systems to support your needs

Closed-loop systems designed specifically for service by Kodak to ensure that each request receives the same superior level of service from start to finish.

#### Global parts infrastructure

At Kodak, parts are managed on a global, national and local basis—with strategically located parts depots—to ensure the right part is available, where and when it's needed.

#### Managed globally, supported locally

Our customers get a local face to answer their calls, backed up by the strength of a global infrastructure.

Few service providers can compare to the depth and breadth of the product portfolio supported by **Kodak** Service & Support. For a complete list of supported manufacturers, contact your reseller, or visit us on the Web at: [www.kodak.com/go/service](http://www.kodak.com/go/service).

**Kodak**  
Service & Support