

# RELEASE LETTER DR-2050C

Canon Publication Number:	05-DR-2050C Version 1.0
Revises:	1.0
Replaces:	None
Total Pages:	25

© 2005 Canon USA, Inc. All Rights Reserved.

The information contained in this release letter is proprietary and confidential information of Canon U.S.A. This document is intended for internal use by Canon U.S.A. Inc. employees and employees of authorized dealers and resellers only.

Transfer of this document to any other parties not specified above without the written permission of Canon U.S.A. Inc. is in violation of the confidentiality of this information. All referenced trademarks and product names are the property of their respective owners and are hereby acknowledged.

Please utilize this document as your main source of information regarding the Canon DR-2050C and related accessories. Further information on Canon DR-2050C may be obtained by contacting your Canon sales representative.



## **About Canon U.S.A., Inc.**

Canon U.S.A., Inc. is an industry leader in professional and consumer imaging solutions and, through its parent company, Canon Inc. (NYSE:CAJ), is a top patent-holder of imaging technologies. The company's comprehensive product line includes networked multifunction devices; digital and analog copiers (color and black and white); printers, scanners, image filing systems, and facsimile machines; camcorders, cameras and lenses; and semiconductor, broadcast and medical equipment. Canon employs 12,000 people at more than 30 facilities throughout North, Central and South America and the Caribbean.

## Table Of Contents

<b>About Canon USA</b>	<b>2</b>
<b>Suggested Retail Price List</b>	<b>4</b>
<b>Introduction</b>	<b>5</b>
Market Trends	5
DR-Scanner Line-up	6
<b>DR-2050C Core Scanning Technologies &amp; Product Overview</b>	<b>7</b>
Sleek, Space Saving Design	7
Superior Image Quality	8
Fast Throughput	8
Reliable Paper Feeding Mechanism	9
Energy Saving Design	10
Design Enhancements	10
Inherited DR-Series Features	11
Simple Connectivity	12
Recommended PC Specifications	12
<i>Bundled Software</i>	
CapturePerfect 3.0	13
Adobe Acrobat 7.0	18
OmniPage SE	18
<b>Maintenance</b>	<b>19</b>
<b>DR-2050C Options and Consumables</b>	<b>19</b>
<b>DR-2050C Specifications</b>	<b>20</b>
<b>Competitive Overview</b>	<b>22</b>
<b>Packaging</b>	<b>23</b>
<b>Service / Support Information</b>	<b>24</b>
<b>Brochure Ordering</b>	<b>24</b>
<b>Online Sales Support Materials /Online Training Resources</b>	<b>24</b>

## Suggested Retail Price List

# DR-2050C

Item No.	Description	Retail Price
0433B002AA	Canon DR-2050C* w/ 16/32 bit ISIS Driver for Windows 16/32 bit Twain Driver for Windows CapturePerfect 3.0 for Windows Adobe® Acrobat® 7.0 Standard OmniPage SE™	\$795

## Accessories

Item No.	Description	Retail Price
7982A001AA	Exchange Roller Kit for DR-2050C/ 2080C	\$49
0249V914	Soft Carrying Case for DR-2050C/ 2080C	\$69

## Services

Item No.	Description	Retail Price
7982A006AA	2 Year CarePAK (Exchange Program) for DR-2050C	\$225

## Introduction

### Market Trends

The document scanner market is categorized according to price and speed based on the following chart.

InfoTrends Segmentation for Document Imaging Scanners		
Category	Price Range	Speed Range
Workgroup	\$500 - \$2,000	Up to 25 ppm
Departmental	\$2,000 - \$5,000	Most 25 – 40 ppm
Low-volume Production	\$5,000 - \$12,000	Most 40 – 60 ppm
Mid-volume Production	\$12,000 - \$30,000	Most 60 – 90 ppm
High-volume Production	> \$30,000	Most 90+ ppm

Swiftly moving past the conventional niche imaging arenas, document scanning technologies are evolving to reach more diverse business markets. Distributed scanning and greater adoption of scanning for compliance issues within Corporate America continue to drive the document scanning market.

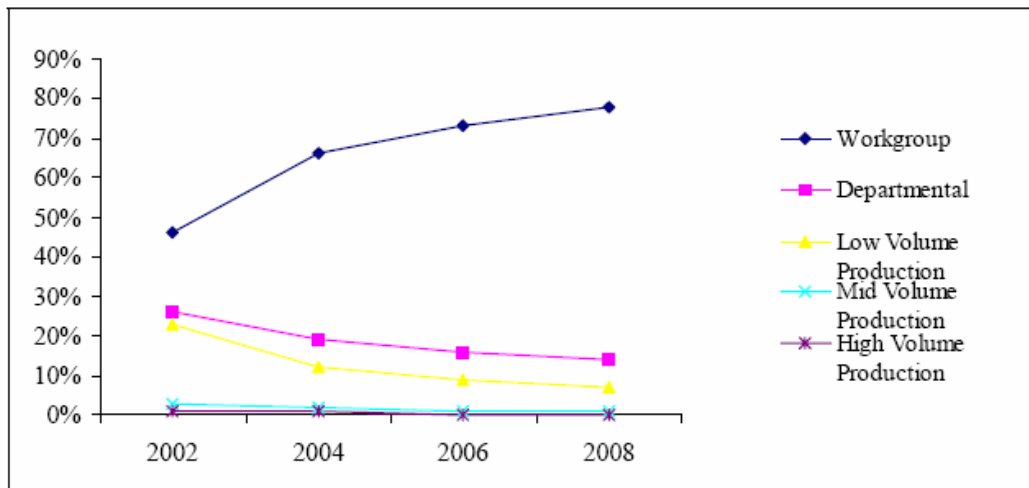
The high-growth workgroup category has been driving scanner shipments and is projected to be the highest revenue producing segment by the end of 2005. Such an optimistic outlook has resulted in highly competitive market conditions in the workgroup category.

As scanning continues to proliferate throughout the general office, ease-of-use is paramount in the workgroup market segment.

High demand features in this market include:

- Automated scanning and image clean-up for minimum user intervention
- Bundled software applications, such as the full version of Adobe Acrobat
- Simple connectivity, primarily high speed USB interfaces
- Easy operation with one-touch buttons to initiate scanning

#### Segment Percentage of Total Document Scanner Shipments 2002-2008; North America\*



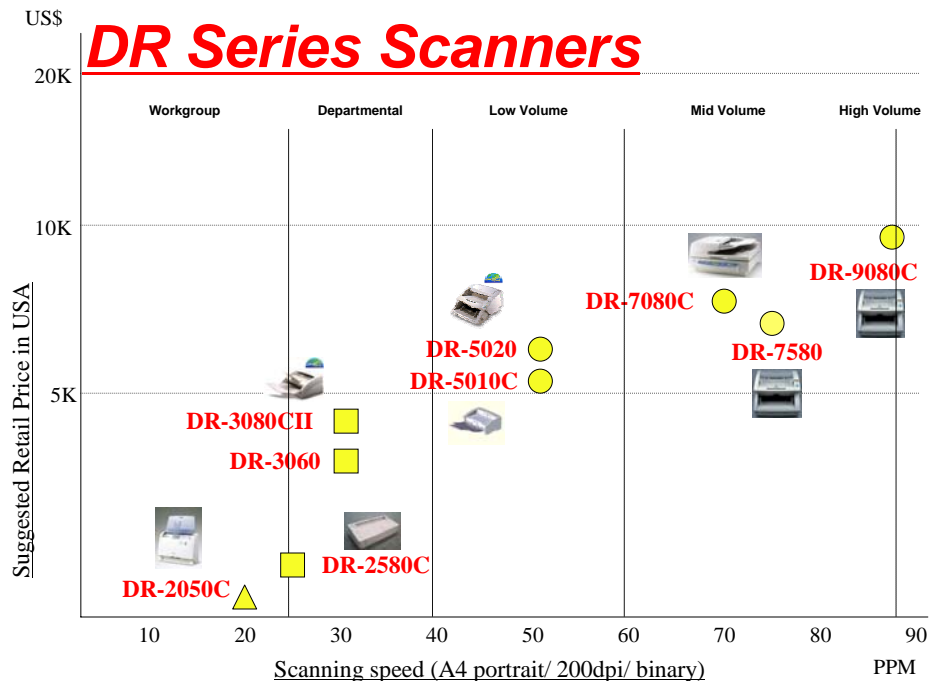
\* Source: InfoTrends 2004 Document Imaging Scanner Market Forecast and Analysis

## DR-Series Scanner Line-up

The DR-2050C is a compact workgroup scanner positioned as a renewal version of the award-winning DR-2080C, Canon's very first document scanner in this category. Due to a strong brand and sales channel, Canon has performed well in the workgroup segment since the introduction of the DR-2080C. The recent addition of the DR-2050C and DR-2580C to Canon's DR-Series Scanner portfolio is expected to significantly grow market share and establish the company as a formidable player in the workgroup category.

The DR-2050C inherits the proven reliability and superior image quality of its predecessors, and offers the solid price-performance Canon's DR-Series Scanner line-up is known for.

In response to the highly competitive market conditions of the workgroup segment, the DR-2050C ships with CapturePerfect 3.0, Adobe® Acrobat® 7.0 Standard and OmniPage SE™. These bundled software applications, coupled with Canon's advanced hardware image technology, make the DR-2050C a remarkable value for under \$800.



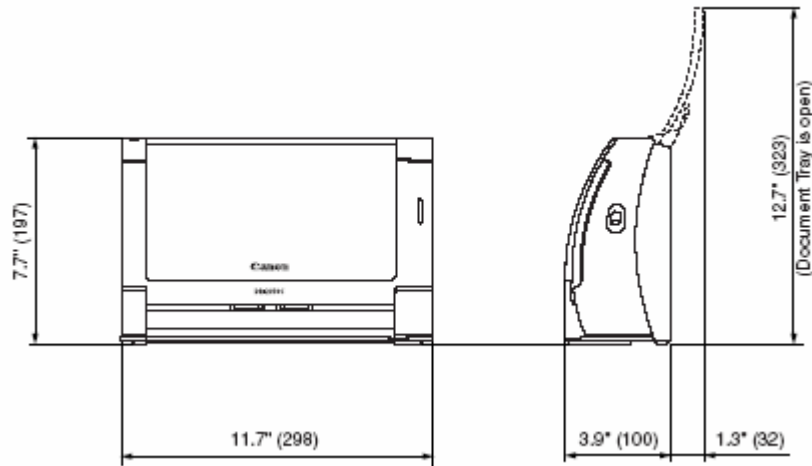
The limited warranty period for the DR-2050C has been extended to 1 year from standard DR-Series 90 day warranty (Please refer to DR-2050C Service Guide for details). Additionally, a 2-year Canon CarePak is available for post warranty exchange service.

## DR-2050C Core Scanning Technologies

When it comes to cost-effective, reliable document scanning, look no further than the DR-2050C. An ideal choice for low-volume image capture or distributed scanning environments, it achieves fast scanning at speeds **up to 20 pages per minute** (Letter/200 dpi/portrait) in Black and White or Grayscale and easily handles double sided documents **up to 40 images per minute**. With an **output resolution up to 600dpi**, the DR-2050C offers superior, high-quality scanning in black-and-white (binary), 256-level grayscale, or 24-bit color.

### Sleek, Space Saving Design

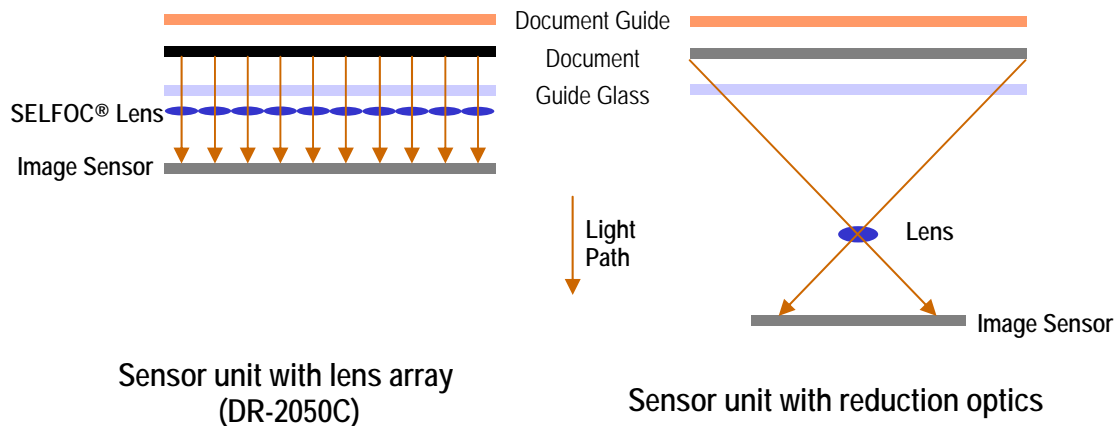
Measuring just **7.7" (H) x 11.7" (W) x 3.9" (D)** and weighing in at **5 lb.**, the DR-2050C can easily be moved around and set up quickly, even in the busiest desktop or countertop spaces.



The key to the DR-2050C's compact size is its **CMOS Contact Image Sensor (CIS)**. This is a self-contained sensor unit with 3 major components: a row of sensor elements, thin optics, and a light source (LEDs). The DR-2050C's CIS unit is far smaller than conventional CCD-based sensor units, which use a bulky mirror-and-lens system known as "reduction optics."

Unlike reduction optics, which have only one lens, the DR-2050C's optics are made up of a row of numerous small lenses. This design **significantly shortens the light path** required to illuminate the document. As a result, the DR-2050C scanner has a very small footprint.

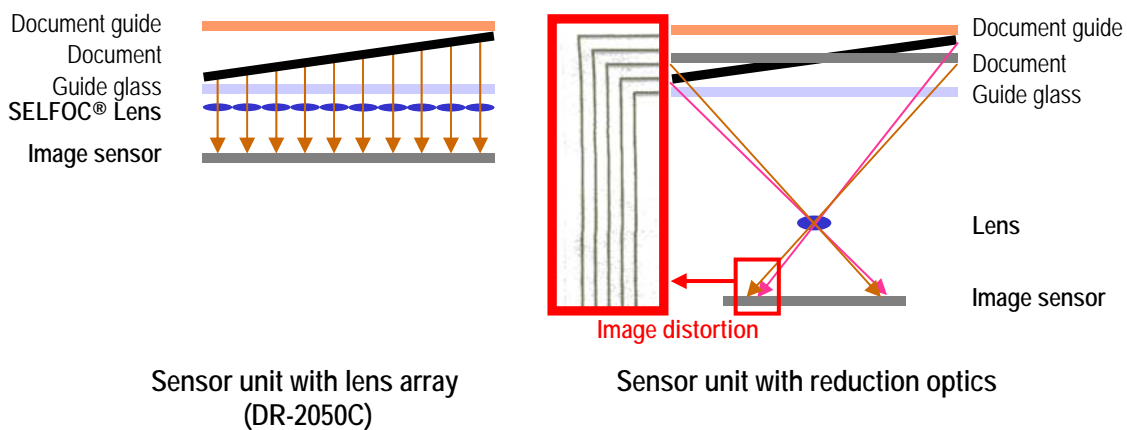
### Lens Array vs. Reduction Optics



## Superior Image Quality

In addition to compact design, the advanced sensor technology of the DR-2050C offers other advantages over conventional Charge Coupled Device (CCD) and Optical Reduction technologies. Multiple lenses mounted along the width the DR-2050C's sensor helps **minimize potential image distortion**. Whereas a sensor unit with reduction optics has only one lens; if a document is not completely flat on the guide glass, some points of the page will be further from the lens than others, resulting in image distortion.

### Image Distortion: Lens Array vs. Reduction Optics



Furthermore, a short light path does not require a strong light source. So instead of using fluorescent lights, the DR-2050C uses LEDs, a light source that **consumes less electricity**. Additionally, fluorescent lights require time to warm up, but LEDs do not. As a result, the DR-2050C is **ready to start scanning** from the moment the power switch is turned on.

## Fast Throughput

The DR-2050C offers competitive scanning speeds compared to other models in its category with a rated speed of **up to 20 ppm or 38 ipm** (LTR/200 dpi/portrait) in B/W and Grayscale modes.

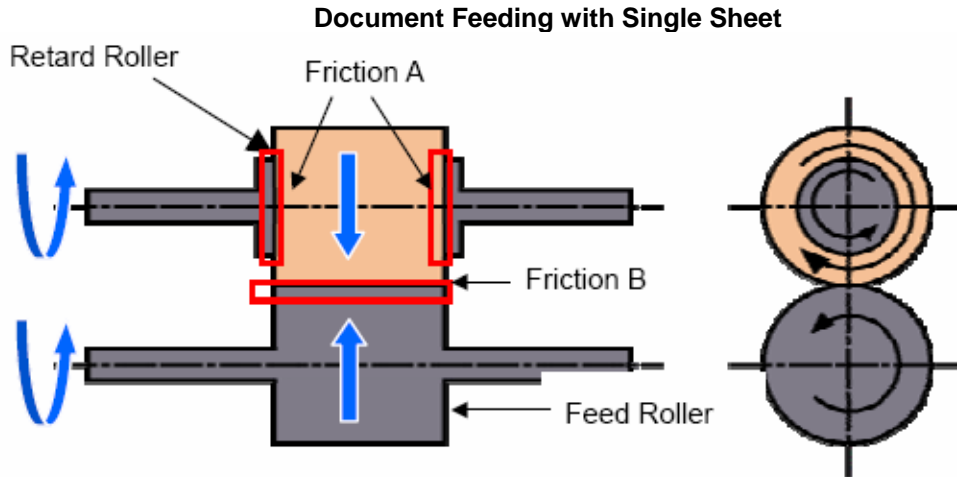
Scanning Speeds (LTR/200 dpi/portrait)	Canon DR-2050C	Fujitsu fi-4120C2	Fujitsu fi-5110C
Black-and-White	20ppm / 40ipm	25ppm / 50ipm	15ppm / 30ipm
Grayscale	20ppm / 40ipm	25ppm / 50ipm	15ppm / 30ipm
Color	10ppm / 20ipm*	25ppm / 50ipm*	15ppm / 30ipm*
SRP	\$795	\$1,595	\$895

\*Scanning Speed in 150 dpi / LTR / portrait

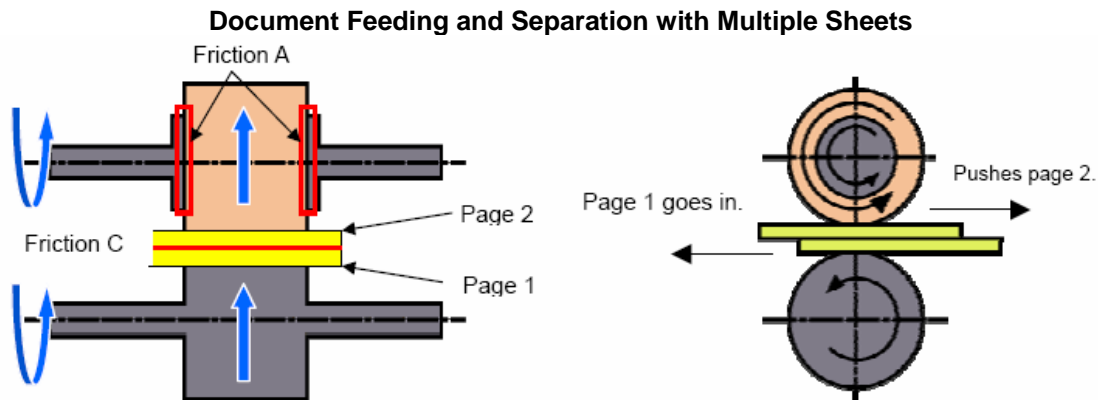


## Reliable Paper Feeding Mechanism

The high-precision roller system of the DR-2050C ensures **smooth, jam-free document feeding** each and every time. The main components of Canon's exclusive feed mechanism are a feed roller and a retard roller. The set of document separation rollers, "Retard Rollers" separates consecutive sheets that are being pushed in the opposite directions, minimizing document double-feeds.



When scanning a single sheet document, the Retard Roller, because it is not fixed to its axle, is rotated by the Feed Roller. The rotation of the axle of the Retard Roller is reverse to the rotation of the axle of the Feed Roller. These movements are a result of increased friction of B compared to A.



Conversely, when scanning multiple sheets, friction A becomes the dominant power to rotate the Retard Roller since friction C is less ( $\text{Friction A} > \text{C}$ ). As a result, the Retard Roller begins to invert its rotation, which pushes the second page back to keep the correct scanning sequence.

The Roller & Pad systems used by competitors have no means of pushing page 2 back out of the feed path. Because part of page 2 enters the scanner, there will be an overlap between the bottom part of page 1 and the top part of page 2, resulting in missing image data.

Multisheet forms bound together can also be fed through and reliably scanned with DR-2050C when this separation mechanism is disabled, called Bypass Mode

Additionally, when documents are fed by the Feed Roller, so little pressure is applied to the other side against the Retard Rollers (made up of soft sponge covered with rubber on surface), that documents are less likely to pickup dust during scanning jobs.

## Energy Saving Design

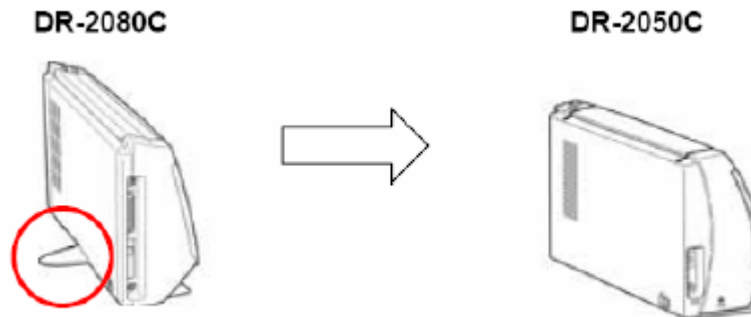
As previously mentioned, the DR-2050C utilizes an 'array' of multiple, tiny LED lenses as its light source, which requires a much shorter light path and **no warm-up time**. Overall, this design feature contributes to considerably **less energy consumption** compared to fluorescent lamps used in competitor scanners.

The Fujitsu fi-4120C2, as shown below, goes into energy saving mode approximately every 15 minutes, whereas the DR-2050C takes just about 10 seconds.

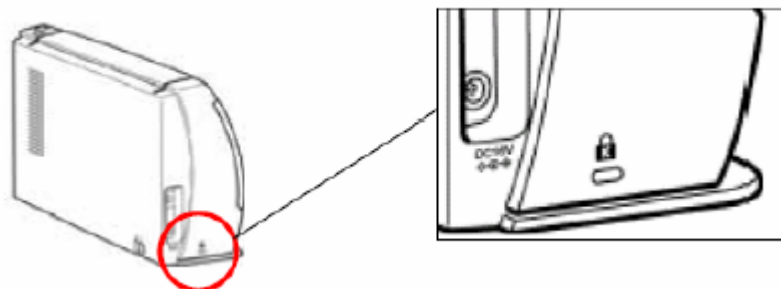
	Power Off	Stand-by	Scanning	Power Saving
<b>DR-2050C</b>	0.4 W	7 W	13 W	3 W
<b>Fi-4120C2</b>	0.45 W	18 W	28 W	6 W

## Design Enhancements

Built with a more stable design, the DR-2050C eliminates the need for the support lever shipped with its predecessor model, DR-2080C, to prevent the unit from accidentally toppling over.



The DR-2050C features a new slot for added security to protect the scanner from theft. A wire lock can be attached through the Kensington Security Slot. This slot can be used in offices and demo stands in retail stores.



## **Inherited DR-Series Features**

The following scan functions and features have become standard among most of Canon's current DR-Series Scanner products and available with the DR-2050C as well.

- ✓ User Preference Registration
- ✓ Advanced Text Enhancement
- ✓ Skip Blank Page
- ✓ Pre-Scan Function
- ✓ Auto Paper Size Detection
- ✓ Automatic Skew Correction
- ✓ Batch Separation Options
- ✓ Text Orientation Recognition
- ✓ Border Removal
- ✓ Edge Enhancement
- ✓ Preset Gamma Curve Function
- ✓ Color Dropout (multi-color dropout not available)
- ✓ Scan Area Setting
- ✓ Folio Function

## Simple Connectivity

With plug-and-play USB 2.0 connectivity, easy integration is ensured and installation is simplified.

<b>Recommended USB Interface Card</b>	
<b>Manufacturer:</b>	<b>Product Name:</b>
Adaptec	USB2connect2000LP (AUA-2000) USB2connect3100 (AUA-3100LP) USB2connect5100 (AUA-5100) USB2connect for Notebooks (AUA-1420)

## Recommended PC Specifications

The connected PC must be an IBM PC/AT or compatible machine meeting the recommended specifications:

- ✓ Intel Pentium™ 4 CPU 2.8 GHz or higher
- ✓ 256 MB RAM PC processing power or above recommended for optimum throughput
- ✓ High-speed USB 2.0 built-in interface or one of the above recommended interface cards
- ✓ An ISIS or TWAIN compatible application software that works on one of the following operating systems

## Operating Systems for use with USB interface:

- ✓ Microsoft Windows 98SE
- ✓ Microsoft Windows Me
- ✓ Microsoft Windows 2000 SP3 or later
- ✓ Microsoft Windows XP Pro SP1 or later
- ✓ Microsoft Windows XP Home SP1 or later

## Bundled Software

---

In addition to a full-featured ISIS/TWAIN driver, the DR-2050C comes bundled with Canon **CapturePerfect 3.0**, **Adobe Acrobat 7.0 Standard**, and **OmniPage SE** software packages. As an out-of-box office scanning tool, the CapturePerfect application was designed to maximize the capabilities of the DR-Series Scanners in scanning, viewing, saving, distributing and printing office documents. Adobe Acrobat is recognized as the most widely accepted application for PDF image file creation.

### CapturePerfect 3.0

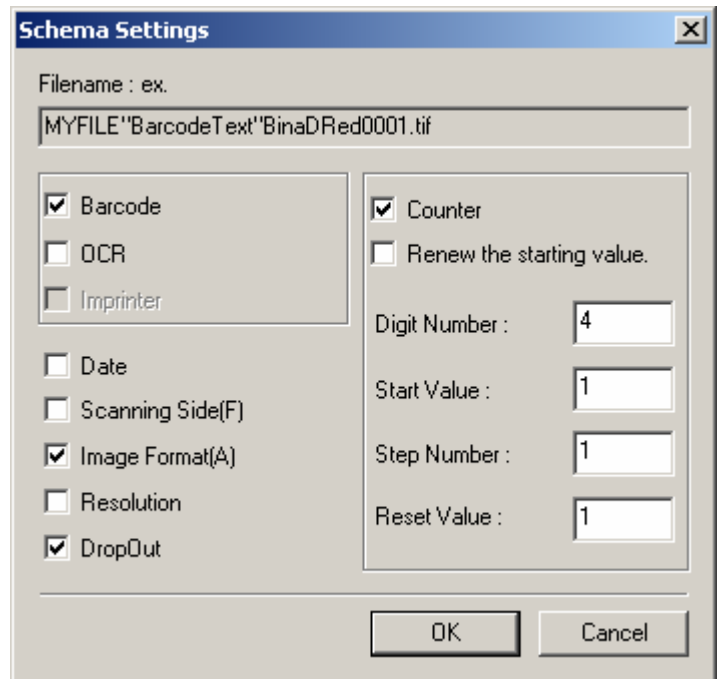
#### File Format Support

CapturePerfect offers a variety of file saving options for converting office documents into electronic files. The scanned images can be saved in different output file formats (or 'Types'), including TIFF (\*.tif), BMP (\*.bmp), JPEG (\*.jpg), or PDF (\*.pdf) files.

Scanning Modes	TIFF	BMP	PDF	JPEG
Binary	Yes	Yes	Yes	No
256-Level Grayscale	Yes	Yes	Yes	Yes
24-bit Color	Yes	Yes	Yes	Yes

#### Multi-page vs. Single-page File Format

Multiple images can be saved into a single TIFF or PDF file (as 'Multi-page' file), or the pages can be separated as necessary into multiple single-image files (as 'Single-page' file). When the 'Multi-page' file scanning option is selected with a user-specified 'number of pages' per document or form, a sequential identification number is automatically generated for each file and appended to the shared portion of the file name that was initially given by the user to the batch before scanning. When the 'Single-page' files are created, the system-generated numbers are always appended to the file name, or additional information such as scan settings can also be selectively included in the file names at the 'Schema Settings' dialog box.



## Scan Functions

CapturePerfect provides users with a number of convenient ways to scan documents for a variety of business imaging needs.

<b>Scan Function</b>	<b>Description</b>
<b>Scan Page</b>	Documents are scanned only one page, i.e., one side of a document at a time. The scanned images can then be saved to a file, sent to a printer or discarded as necessary. Duplex scanning is not available with this option.
<b>Scan Batch to File</b>	In many cases, documents are scanned in batches, and the scanned images are saved either into Multi-page file(s) per batch or separately into multiple Single-page files.
<b>Scan Batch to Printer</b>	As documents are scanned, the scanned data is sent directly to a printer for printing from the document images. The scanned images are not saved after scanning using this option. (Documents can also be printed in CapturePerfect from previously saved image files.)
<b>Scan Batch to Mail</b>	Users can also choose to send scanned images as file attachments to email messages. A MAPI (Microsoft Messaging Application Programming Interface) – compliant email client application program, for example, Microsoft® Outlook®, many popular Internet email applications, or Lotus Notes®, is required on the computer. As with the 'Scan Batch to Printer' option, the scanned images are not saved on the PC after scanning.
<b>Scan to Presentation</b>	The projector connected to the PC displays scanned images in this mode when page after page is loaded on the Paper Feed Tray and scanned during business presentations. Scanned images can optionally be saved when the presentation is closed.
<b>Scan Job</b>	'Scan Jobs' can be pre-registered for routine scan operations or other frequently repeated scan sessions using the same scanning conditions. 'Scan to Mail,' 'Scan to Print,' and 'Scan to PC' operations are available as different types of the Scan Job, and a total of up to 99 Jobs can be registered.

## Image File Editing Functions

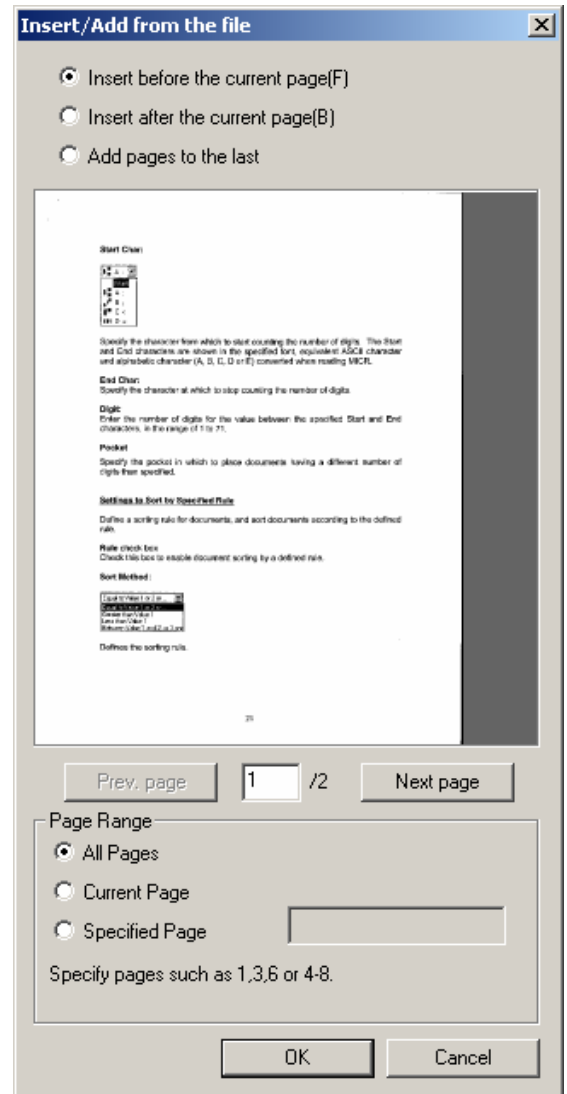
CapturePerfect offers a variety of post-scan image editing capabilities.

For example:

- Brightness/contrast on output images can be adjusted to enhance the image quality.
- New pages, whether from scanning new documents or from an existing image file, can be inserted anywhere in the middle or appended to the end of existing image files once scanned and saved with CapturePerfect.
- Pages can be replaced with new pages, extracted and saved into another file, or permanently deleted as necessary.
- Until any changes are saved, the editing operations can be canceled (“Undo”) or reapplied (“Redo”).
- Part of or the entire displayed image can be selected, as illustrated below, with a rectangle selection below, and then copied onto the clipboard.
- Multiple files can be combined into a single file.



Image Copy Function



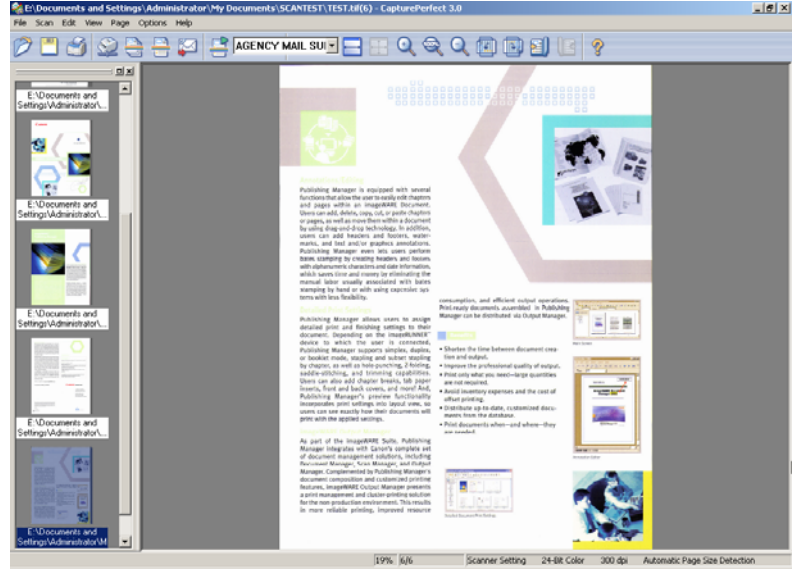
Insert/Add Image Function

## Image Display Functions

CapturePerfect offers multiple display options to view scanned images.

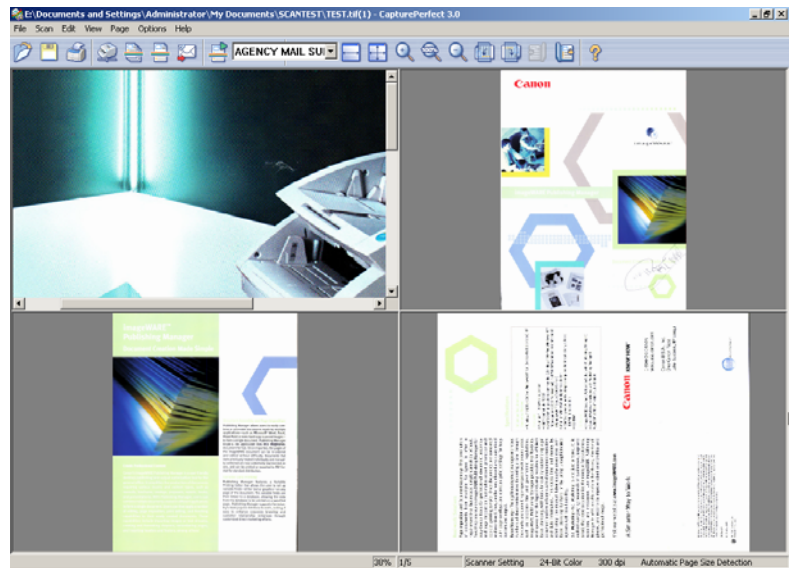
### Thumbnail View of Images

When the 'Thumbnail' display option is selected, the thumbnail (reduced) views of opened or scanned images are displayed in the "Thumbnail" window on the left pane of the screen, and the selected thumbnail is displayed in the main 'Image View' window on the right side of the screen. The images in the 'Thumbnail' window can be **'dragged and dropped'** at the users' convenience to be displayed in desired order. This display option helps users to easily navigate through piles of document images, for example, to locate a specific page of interest.



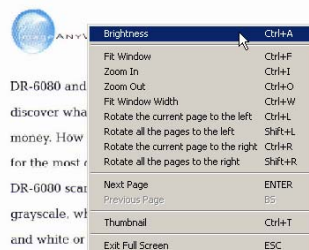
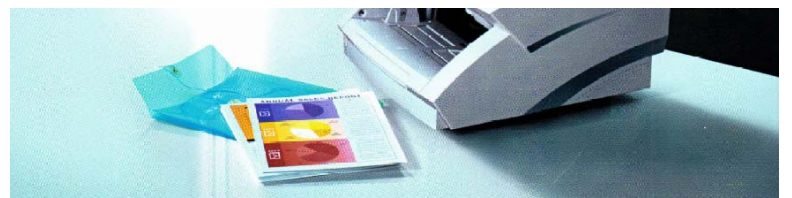
### Split View of Images

Users may choose to split the image display window into two or four windows to **view more than a single image at a time**. Scanning operations can be performed while this 'Split View' feature is enabled; other image display functions, such as image magnification, reduction or rotation, are independently applied to each image displayed in each window. The 'Thumbnail Display' option can also be combined with this 'Split View' feature.



### Full-Screen View of Images

Images can be viewed at **full screen for business presentations** or on any other image display/exhibit occasion. While in this viewing mode, image display tools (Brightness, Zoom, Rotate, Page Navigation, Thumbnail, etc.) become available when the users right-click anywhere on the currently displayed full screen image.



advanced Canon image sensor technology, they both offer great image quality. And, of course, they provide the legendary Canon reliability you've come to expect. So when it comes to performance, functionality and value, turn to the DR-6080 and DR-9080C scanners, and take advantage of not doing business as usual.

[www.usa.canon.com](http://www.usa.canon.com)  
1-800-OK-CANON

**Canon** KNOW HOW®

Canon and Canon Know How are registered trademarks of Canon Inc. IMAGEANYWARE is a service mark of Canon U.S.A., Inc. ©2005 Canon U.S.A., Inc. All rights reserved. Canon Electronics Inc. All page-per-minute statistics based on letter-sized documents, portrait-feeding direction at 300 dpi. Actual processing speeds may vary based on PC performance and application software. Contact your Canon representative for minimum OS, hardware and software requirements.

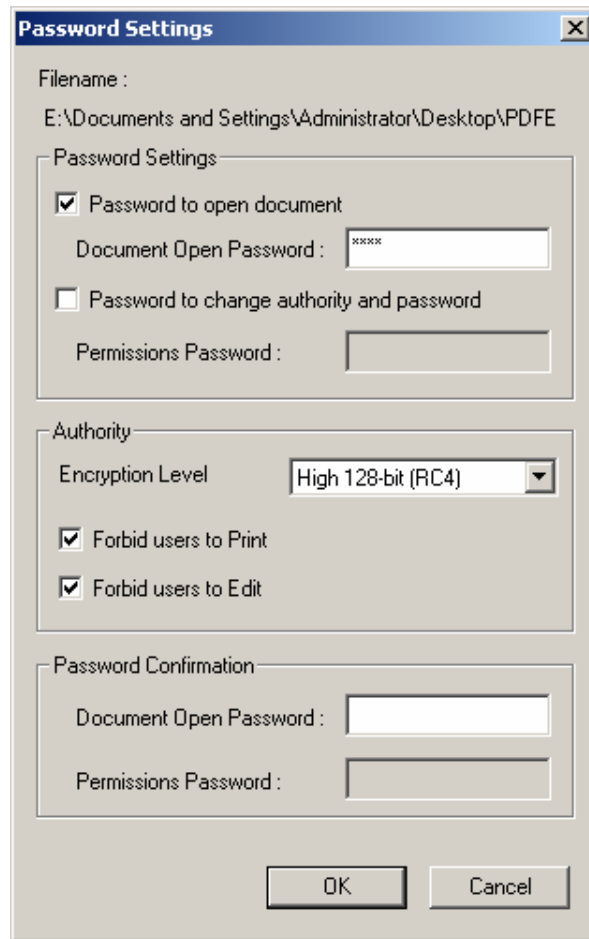


## Searchable PDF File Format Support

When documents are scanned into PDF file format in CapturePerfect, the printed character strings within the documents, can be recognized and saved as text data attached to the PDF output files. The **output PDF files with the embedded OCR text then become “searchable”** by a string of text as the search ‘keyword,’ similar to using the Windows ® built-in Search tool. The text contained in these ‘Searchable PDF’ files can also be extracted and copied over into other text application files such as Microsoft® Word® files.

## PDF File Security

When scanning with CapturePerfect, security-sensitive documents can be scanned into PDF file format and **password-protected from unauthorized user access for opening, editing or printing**. The PDF files can be **encrypted** either at **40-bit** (‘RC3’ standard) or **128-bit** (‘RC4’ standard) encryption levels, depending on the security requirements and nature of image files. This security functionality is increasingly important to businesses with industry specific government compliance initiatives.



**Password Settings**

Filename :  
E:\Documents and Settings\Administrator\Desktop\PDFE

**Password Settings**

Password to open document  
Document Open Password : [xxxxx]

Password to change authority and password  
Permissions Password : [ ]

**Authority**

Encryption Level : High 128-bit (RC4)

Forbid users to Print  
 Forbid users to Edit

**Password Confirmation**

Document Open Password : [ ]  
Permissions Password : [ ]

OK Cancel

**Adobe® Acrobat® 7.0**

Adobe® Acrobat® 7.0 Standard software is bundled at no additional cost as an added value with purchase of the DR-2050C. Scanner users can take advantage of a variety of plug-in functions and comprehensive software features, such as in electronic form creation, document sharing, connectivity to databases, encryption/security, and electronic signature.

*Note:* The service support for the bundled Adobe Acrobat software is provided by local service agents from Adobe Systems, Inc. For more detailed information, please refer to the documentation included in the software package.

**OmniPage SE™**

OmniPage SE™ is an optical character recognition (OCR) software that accurately and easily converts scanned paper documents and images from image files into editable text for use in your favorite computer applications like Microsoft Word. The product bundled with the DR-2050C is a Special Edition of the world-renowned OmniPage Pro™ software.

*Note:* For more detailed information, please refer to the documentation included in the software package.

## Maintenance

### User-Replaceable Exchange Roller

It is recommended that the Feed roller and the Retard roller be replaced periodically, every 30,000 scans

## DR-2050C Options and Consumables

### Exchange Roller Kit

- Product Code: 7982A001AA
- Details: Feed Roller, Retard Roller x 1pc each
- Exchange: By Users. Recommended at every 30,000 scans

## DR-2050C Specifications

No	Item	Specifications
1	<b>Type</b>	Compact Color Document Scanner
2	<b>Document Reading</b>	<i>Sensor</i> CMOS CIS Sensor
		<i>Optical Resolution</i> 600dpi
		<i>Light Source</i> RGB LED
3	<b>Scanning Side</b>	Front / Back / Duplex
4	<b>Scanning Speed (LTR 200dpi Portrait)</b>	B&W: 20ppm (Simplex) / 40ipm (Duplex)
		Grayscale: 20ppm (Simplex) / 40ipm (Duplex)
		Color: 7ppm (Simplex) / 12ipm (Duplex)
		Color @ 150dpi: 10ppm (Simplex) / 20ipm (Duplex)
5	<b>Documents</b>	<i>Size</i>
		Width
		Length
		<i>Weight Thickness</i> /
		<i>Long Document Mode</i>
		<i>Document Requirements</i>
6	<b>Document Storage</b>	2) Eject
		3) Ejected face direction
7	<b>Paper separation</b>	Retard Roller
8	<b>Output Resolution</b>	100 x 100dpi, 150 x 150dpi, 200 x 200dpi, 240 x 240dpi, 300 x 300dpi, 400 x 400dpi, 600 x 600dpi
9	<b>Output Mode</b>	Binary
		Grayscale &

		Color	24bit color
<b>10</b>	<b>Interface</b>	USB 2.0, USB 1.1 (USB 2.0 recommended)	
<b>11</b>	<b>Dimensions</b>	Tray Closed: 11.7" (W) x 3.9" (D) x 7.7" (H) Tray Opened: 11.7" (W) x 5.2" (D) x 12.7" (H)	
<b>12</b>	<b>Weight</b>	Approx. 5 lb	
<b>13</b>	<b>Bundled Software</b>	ISIS/TWAIN Driver, CapturePerfect 3.0, Adobe Acrobat 7.0 Standard, OmniPage SE	
<b>14</b>	<b>Option</b>	None	
<b>15</b>	<b>Consumable</b>	Exchange Roller Kit (Feed, Retard rollers)	
<b>16</b>	<b>Daily Duty Cycle</b>	Approx. 700 scan / day	

*Note:* The specifications are subject to change without notice

## Competitive Overview

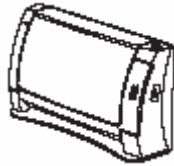
		Canon DR-2060C	Fujitsu fi-4120C2	Fujitsu fi-4220C2	Fujitsu fi-5110C	HP ScanJet 8260	HP ScanJet 8290	Vicioneer Strobe 450X PDF
1	Characteristic	Workgroup						
	Category	Workgroup						
2	Color	O	O	ccc	O	O	O	O
	Duplex	O	O	ccc	O	O	O	O
	Flatbed	X	-	O	-	O	O	X
	ADF (W x L)	Min. 55 x 70mm Max. 215 x 355 mm	53 x 74 mm 215.9 x 355.5 mm	ccc ccc	53 x 74 mm 215 x 355.5 mm	89 x 152 mm 216 X279 mm (Legal size)	89 x 152 mm 216 X279 mm (Legal size)	50 x 90 mm (Business card) 216 X279 mm (Legal size)
3	FB (W x L)	None (Firmware needs to be upgraded)	up to 854mm	ccc	Maximum up to 854mm	-	-	-
	Capacity	50 sheets or 5mm	50 sheets	ccc	50 sheets	50 sheets	50 sheets	50 sheets
4	Maximum Width	216 mm	216 mm	ccc	216 mm	216 mm	216 mm	216.9 mm
	B&W	20ppm / 38ipm	25 ppm / 50 ipm	ccc	15 ppm / 30 ipm	15 ppm / 16 ipm	25 ppm / 16 ipm	20ppm / 30ipm
	Grayscale	20ppm / 38ipm	25 ppm / 50 ipm	ccc	15 ppm / 30 ipm	-	-	-
	Color	7ppm / 12ipm (100dpi: 18ppm/34ipm)	25 ppm / 50 ipm (150dpi)	ccc	15 ppm / 30 ipm (150dpi)	-	16 ppm / 6 ipm (150dpi)	-
5	Optical Resolution	600 dpi	600 dpi	ccc	600 dpi	4800 dpi	4800 dpi	600 x 1200 dpi
	Output Resolution	Range: 100 / 150 / 200 / 240 / 300 / 400 / 600 dpi Unit: Fixed at selections above	50-600 dpi Possible to set by 1dpi at range above	ccc	50-600 dpi Possible to set by 1dpi at range above	72-4800 dpi	72-4800 dpi	75-2,400 dpi
7	Grayscale	8 bit	Internal 10 bit / Output 8bit	ccc	Internal 10 bit / Output 8bit	-	-	Internal 16bit / Output 8bit
	Color	24bit (8GB 8bit each)	24bit (8GB 8bit each)	ccc	24bit (8GB 8bit each)	24 bit	24 bit	Internal 48bit / Output 24bit
9	Dropout Color	O B/G/B (Enhancement)	O B/G/B	ccc	O B/G/B	-	-	O B/G/B
	Switch among RGB	O	O	ccc	O	-	-	-
10	Front & Back	O	O	ccc	O	-	-	-
	Standard	USB2.0	SCSI-II / USB2.0	ccc	USB2.0	USB2.0/SCSI	USB2.0/SCSI	USB2.0/USB1.1
11	Option Slot	-	-	ccc	-	-	-	-
	Machine Size (mm) (W x D x H)	298 x 100 x 197 mm	301 x 168 x 158 mm	302 x 569 x 229 mm	293.5 x 168 x 130 mm	574 x 399 x 195 mm	575 x 399 x 196 mm	338 x 152 x 310 mm
12	Weight	2.5 kg	3.5 kg	8 kg	2.7kg	6.6kg	6.6kg	3.9kg
13	Energy Star	O	O	ccc	O	O	O	X
14	Driver	- ISIS - TWAIN	- ISIS - TWAIN	ccc	- ISIS - TWAIN	- ISIS - TWAIN	- ISIS - TWAIN	- ISIS - TWAIN
15	Key Applications Software	- CapturePerfect 3.0 - Adobe Acrobat 7.0	- ScandAll21 - Adobe Acrobat 7.0	ccc	ccc	- VRS software - HP Photo & Imaging software - Adobe® Photoshop® Elements - Adobe Acrobat Reader® - NewSoft® Presto! BizCard Reader - IRIS Readiris Pro - ScanSoft PaperPort Deluxe - ScanSoft OmniForm	- VRS software - HP Photo and Imaging software with HP Share-to-Web software and HP Memosize Disc Creator - HP Smart Copy Utility - Adobe Acrobat Reader - NewSoft® Presto! BizCard Reader (Macintosh version in English only) - Readiris Pro OCR software - Adobe Photoshop Elements (in English only for Macintosh) - ScanSoft PaperPort Deluxe - ScanSoft OmniForm - NBI OneStep	- ScanSoft PaperPort Deluxe 5.0 - ScanSoft TextBridge Pro 9 OCR - Pixel QuickScan 3.0 (demo version) - ArcSoft PhotoImpression
		- OmniPage SE		ccc				
16	Option		- Imprinter - Image Processing Software Option	-	- Image Processing Software Option			
17	Consumable	- Exchange Roller kit (every 30k)	- Pad Unit (every 50k) - Pickup Roller Unit (every 100k) - Cleaning Kit	ccc ccc ccc	- Pad Unit (every 50k) - Pickup Roller Unit (every 100k) - Cleaning Kit			
18	Price	Japan Yen 64,800	Yen 120,000	Yen 240,000	Yen 90,000			
	USA	\$900	\$1,995	\$1,995	\$895	\$900	\$1,499	\$699
	Europe	Euro800						
19	Daily Duty Cycle	700 sheets	up to 2,000 sheets	ccc			1,000 sheets	500 pages
20	Notes		- Exchangeable Background color (Black/White) - Double feed detection (Length/Thickness by Optical sensor) - Card scanning	ccc ccc ccc	- Double feed detection (Length/Thickness by Optical sensor)			Similar models available as ... Xerox DocuMate262 Kodak 130/140 Avision AV-220

UNKNOWN

Based on information publicly available as of 5/05

## Packaging

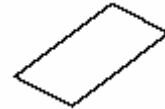
Items Included in the Box
DR-2050C Main Body
Start-up Manual
Registration Card (US and Canada only)
AC Adapter
DR-2050C/2080C Set-up Disc (CD-ROM)
Warranty Card (US and Canada only)
USB Interface Cable
Power Cord
Adobe Acrobat Set-up Disc (CD-ROM)
Document Guide Adapter
Adjustment Sheet (Shading Sheet)
Feed Roller



DR-2050C Main Body



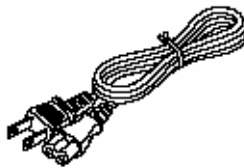
Start-up Manual



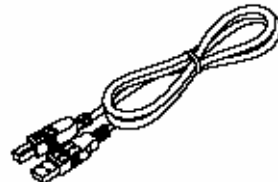
Registration Card



AC Adapter



Power Cord



USB Interface Cable



Document Guide Adapter



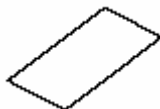
DR-2050C/2080C Set-up



Disc Adobe Acrobat Set-up Disc



Adjustment Sheets



Warranty Card



Feed Roller

## Systems Support And Services Information

### Technical Support for DR-Scanner Authorized Servicers

In the event assistance is required by a Canon Authorized Servicer for the support of the DR-2050C, Canon USA's Technical Support Center will provide support and problem escalation. The Technical Support Center will provide second level support for Authorized DR-2050C Servicers only. A valid Support ID and DR-2050C serial number is required to access the Technical Support Center. Hardware support is available Monday through Friday, 9:00am-8:00pm Eastern Time and software and connectivity support is available Monday through Friday, 9:00am-6:00pm Eastern Time. Please see the DR-2050C Service Guide for complete details. If you are not an authorized servicer for DR products, please contact your Canon representative should you wish to become authorized.

### End User Product Support

In the event assistance is required by an end user for the support of the DR-2050C, a reseller or end user can contact the Canon USA Help Desk (CITS) at 1-800-423-2366. CITS works at the Canon Call avoidance center with the objective to reduce the number of onsite service visits. CITS will take the first call from resellers and end users and provide comprehensive support as follows:

- Answer product related questions
- Provide pre- and post-sales support including purchase recommendations
- Perform troubleshooting
- Assist with set-up and testing the unit
- Reload software and drivers
- SCSI card recommendations

### Canon World Wide Web Site

Another service available through Canon U.S.A. support is the Canon World Wide Web site. In addition to providing information on all Canon products, an area is provided for download of the latest versions of the drivers.

The Canon USA World Wide Website, is located @ <http://www.usa.canon.com>.

### Internet Systems and Technical Support

Canon USA's Systems and Technical Support Division provides high quality e-Support via the internet and is only available for Canon USA Authorized Services. Canon e-Support is designed to give Authorized Servicer Technicians access to technical support information via the Worldwide Web. Please refer to the DR-2050C Service Guide for details.

### Service Training and Authorization Policy

Please refer to the DR-2050C Service Guide.

### Canon U.S.A Limited Warranty Conditions

Please refer to the DR-2050C Service Guide.



## **Brochure Ordering**

To obtain information concerning the availability, pricing and order forms for Canon DR Scanner brochures, please see Canon's marketing website.

## **Online Sales Support Materials**

Canon U.S.A., makes a wide variety of Sales Support materials available to sales personnel designed to aid in the positioning and sale of Canon solution offerings. These items are frequently updated, with new items made available on a continual basis.

To receive the latest information concerning these support tools, please access the Canon's marketing website.

## **Online Sales Training**

A comprehensive web-based sales training module on the DR-2050C is available on Canon's marketing website.